

Reprinted from **JOURNAL OF FORESTRY**
Vol. XXXIV, No. 12, December, 1936

THE HARVARD FOREST MODELS

BY A. C. CLINE

Harvard Forest

THE HARVARD FOREST MODELS

BY A. C. CLINE

Harvard Forest

SOME five years ago a generous friend of the Harvard Forest and the late Professor Richard T. Fisher, first director of the Forest, conceived a plan for a forestry museum to be erected near the present site of the Forest headquarters at Petersham, Mass. Its primary purpose was to be the education of the woodland owner and general public in central New England forestry, and the principal feature of its contents a set of small-scale models illustrating the history and silvicultural treatment of the local forests. The prospect of such a unique and eminently useful gift appealed deeply to Professor Fisher, the more so because of his strong belief in the value of visual aids to instruction, and he entered whole-heartedly into the exacting task of designing the models and instructing the artists in the minutiae of tree and stand structure. Members of the model-making firm of Guernsey and Pitman, of Cambridge, Mass., spent many days at the Forest making sketches, photographs, and notes to answer the scores of questions which arose in connection with the building of each model. Several months were required for a group of six artists to complete a single one. In all, sixteen have been constructed during the past four years, the first eight under the supervision of Professor Fisher, the remainder under that of the writer.

The complete set of twenty-four models will be composed of a historical series of seven models portraying the major steps in the land and forest history of the region, and a silviculture series of seventeen models dealing with such cultural treatments as planting, weeding, thinning, pruning, and

reproduction cuttings. The historical series traces the changes in land use and vegetative cover which have taken place on the same piece of ground over a period of two hundred years. It begins with a model of the virgin forest, and ends with one of a cordwood-size hardwood stand which followed the cutting of "old-field" white pine. The models forming the silviculture series present a wide variety of soil and topography, all typical of the central New England region, and, in so far as possible, the composition, form, and density of the miniature stand and its appearance before and after treatment are based on actual cases and recorded observations, (see Figures 1 and 2).

It is believed that such a museum, devoted largely to forestry exhibits of a local nature and situated in the midst of a forest which provides within easy reach living examples of these, will contribute greatly towards a better appreciation and understanding of New England forests and forestry, and a quickened interest in the practical application of silviculture.

In connection with the Tercentenary Celebration of Harvard University the sixteen completed forest models were placed on temporary display at the University Museum on Oxford Street, Cambridge, where they will perhaps remain for some months. The staff of the Harvard Forest extends a most cordial invitation to the members of the Society of American Foresters and to the general public to visit the exhibit.

An illustrated brochure, entitled *The Harvard Forest Models*, may be obtained by those unable to visit the exhibits.

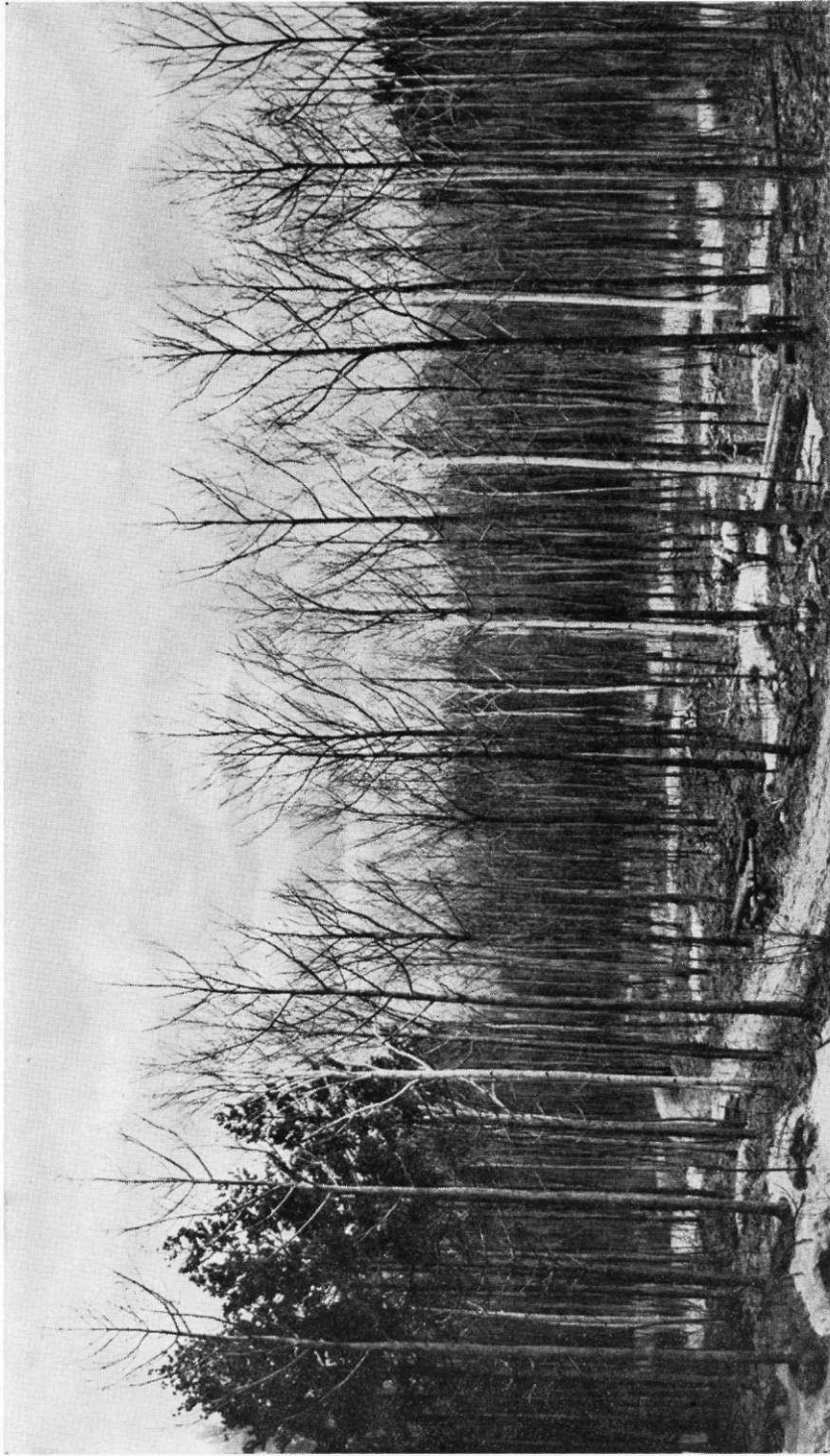


Fig. 1.—Model No. 4 of the Silvicultural Series showing the third thinning in a stand of mixed white pine and hardwoods 50 years old.



Fig. 2.—Model No. 7 in the Silvicultural Series showing artificial pruning of white pine to obtain clear lumber.