

Harvard Forest Data Archive HF006-03

Data File:

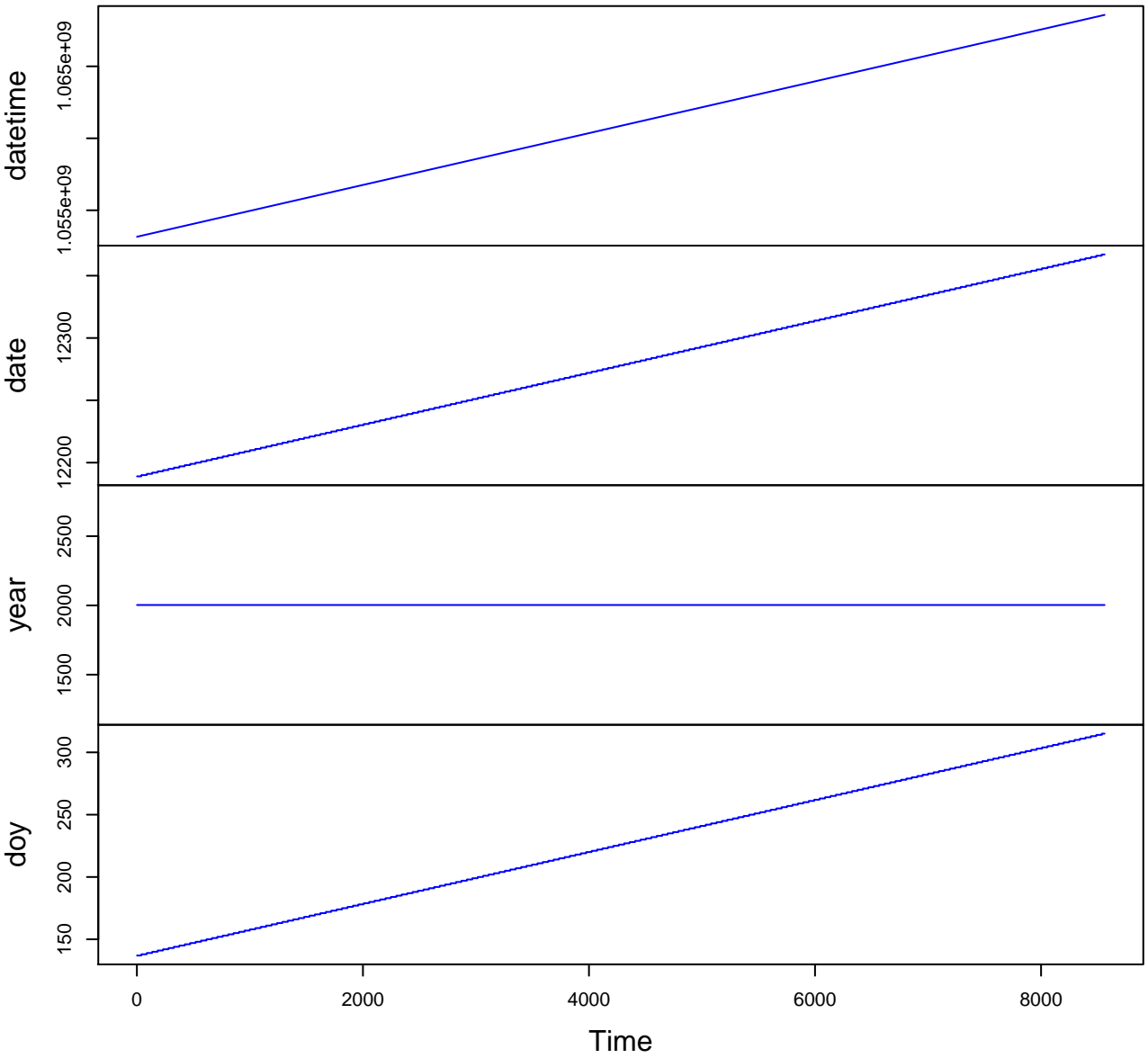
Name = hf006-03-autochamber.csv  
Description = autochamber  
Rows = 8562 Columns = 20  
MD5 checksum = c74c44d7b490e6eec117116b0a6a2989

Variables:

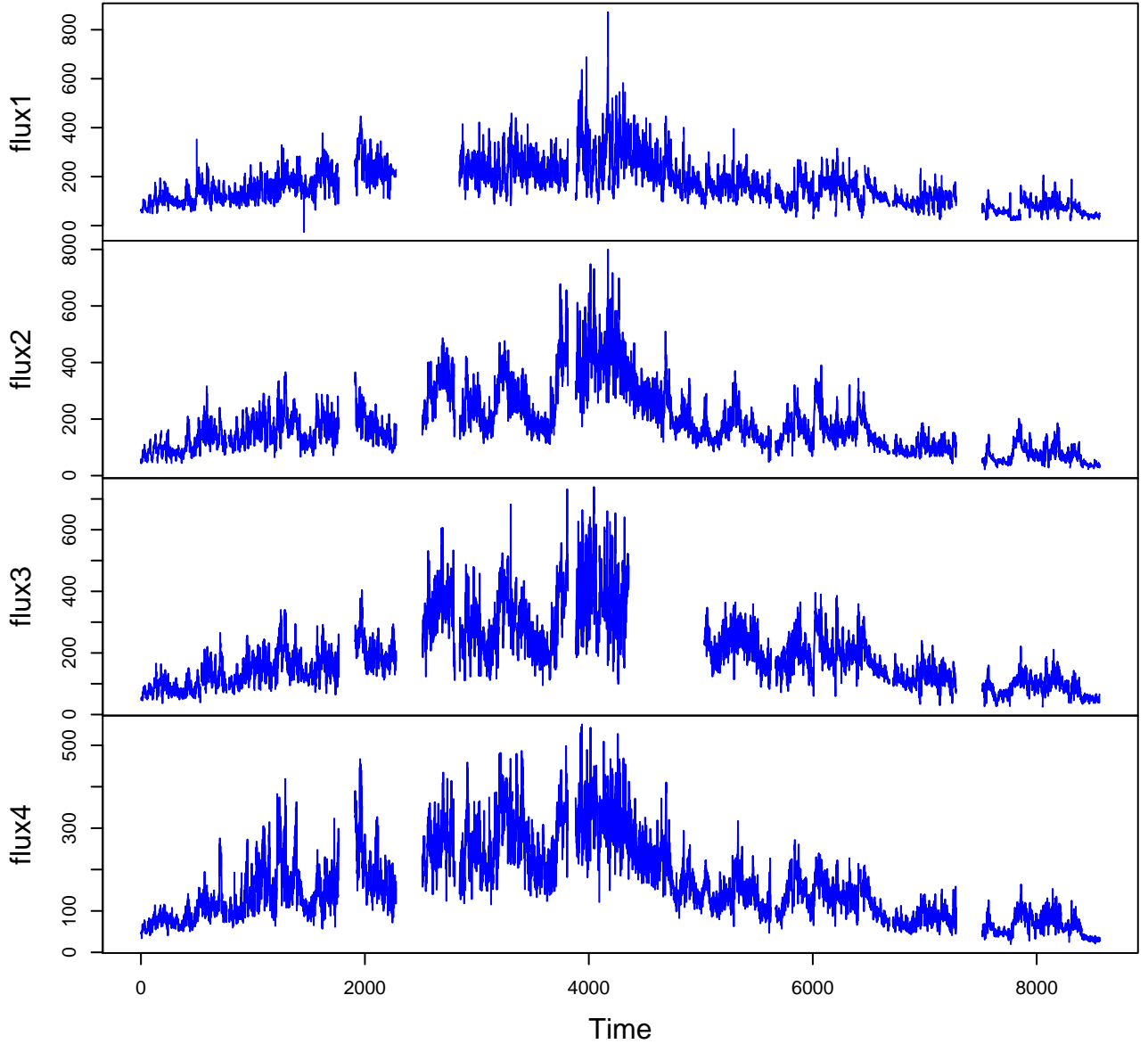
datetime = date and time  
date = date  
year = year  
doy = day of year (nominalDay)  
flux1 = soil respiration measured at collar 1  
(milligramPerMeterSquaredPerHour)  
flux2 = soil respiration measured at collar 2  
(milligramPerMeterSquaredPerHour)  
flux3 = soil respiration measured at collar 3  
(milligramPerMeterSquaredPerHour)  
flux4 = soil respiration measured at collar 4  
(milligramPerMeterSquaredPerHour)  
flux5 = soil respiration measured at collar 5  
(milligramPerMeterSquaredPerHour)  
flux6 = soil respiration measured at collar 6  
(milligramPerMeterSquaredPerHour)  
temp.l1 = soil temperature measured in leaf litter (celsius)  
temp3 = soil temperature measured at 3 cm (celsius)  
temp4.5 = soil temperature measured at 4.5 cm (celsius)  
temp7 = soil temperature measured at 7 cm (celsius)  
temp8.5 = soil temperature measured at 8.5 cm (celsius)  
temp12 = soil temperature measured at 12 cm (celsius)  
temp14 = soil temperature measured at 14 cm (celsius)  
temp36 = soil temperature measured at 36 cm (celsius)  
mois5 = soil moisture measured at 5cm depth (volumetric) (number)

Variable	Min	Median	Mean	Max	NAs
datetime	2003-05-17T04:31		2003-11-11T12:31		0
date	2003-05-17	2003-08-14	2003-08-13	2003-11-11	0
year	2003.000	2003.000	2003.000	2003.000	0
doy	137.000	226.000	225.866	315.000	0
flux1	-25.900	154.280	164.939	872.100	1421
flux2	22.170	157.160	182.769	799.620	1005
flux3	25.180	168.715	191.309	738.970	1604
flux4	19.640	138.845	161.530	550.630	984
flux5	27.420	171.430	194.784	761.590	1253
flux6	23.890	175.270	196.942	726.410	1449
temp.11	-0.950	15.310	14.690	26.600	0
temp3	1.240	15.420	14.718	24.200	91
temp4.5	3.600	14.950	14.238	20.980	0
temp7	4.930	15.200	14.242	20.680	0
temp8.5	4.630	14.980	14.035	20.000	0
temp12	5.200	15.150	14.109	20.110	0
temp14	6.030	14.710	13.654	19.010	0
temp36	7.960	13.680	12.946	18.120	0
mois5	0.200	0.330	0.325	0.570	606

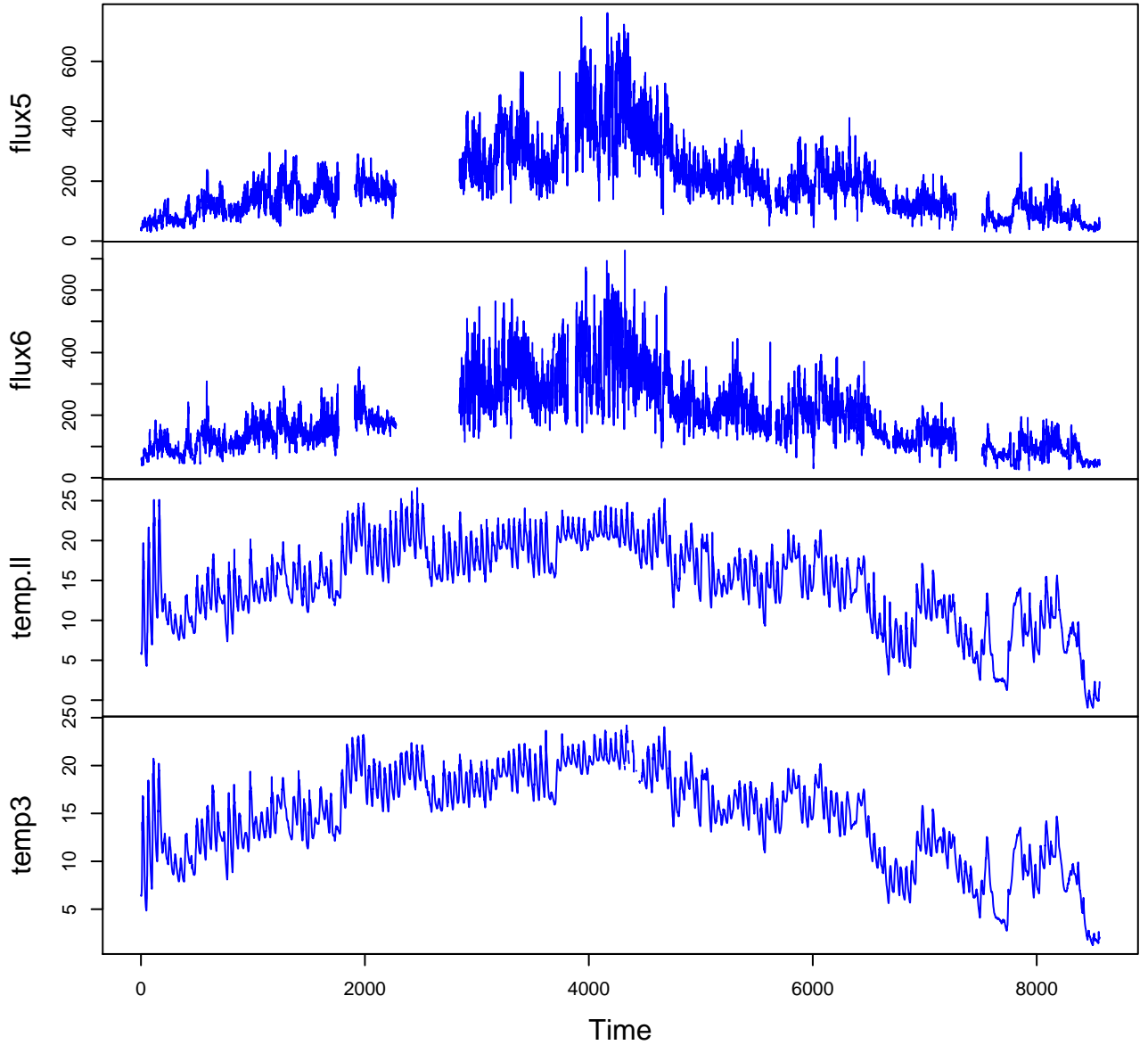
# HF006-03 Plot 1



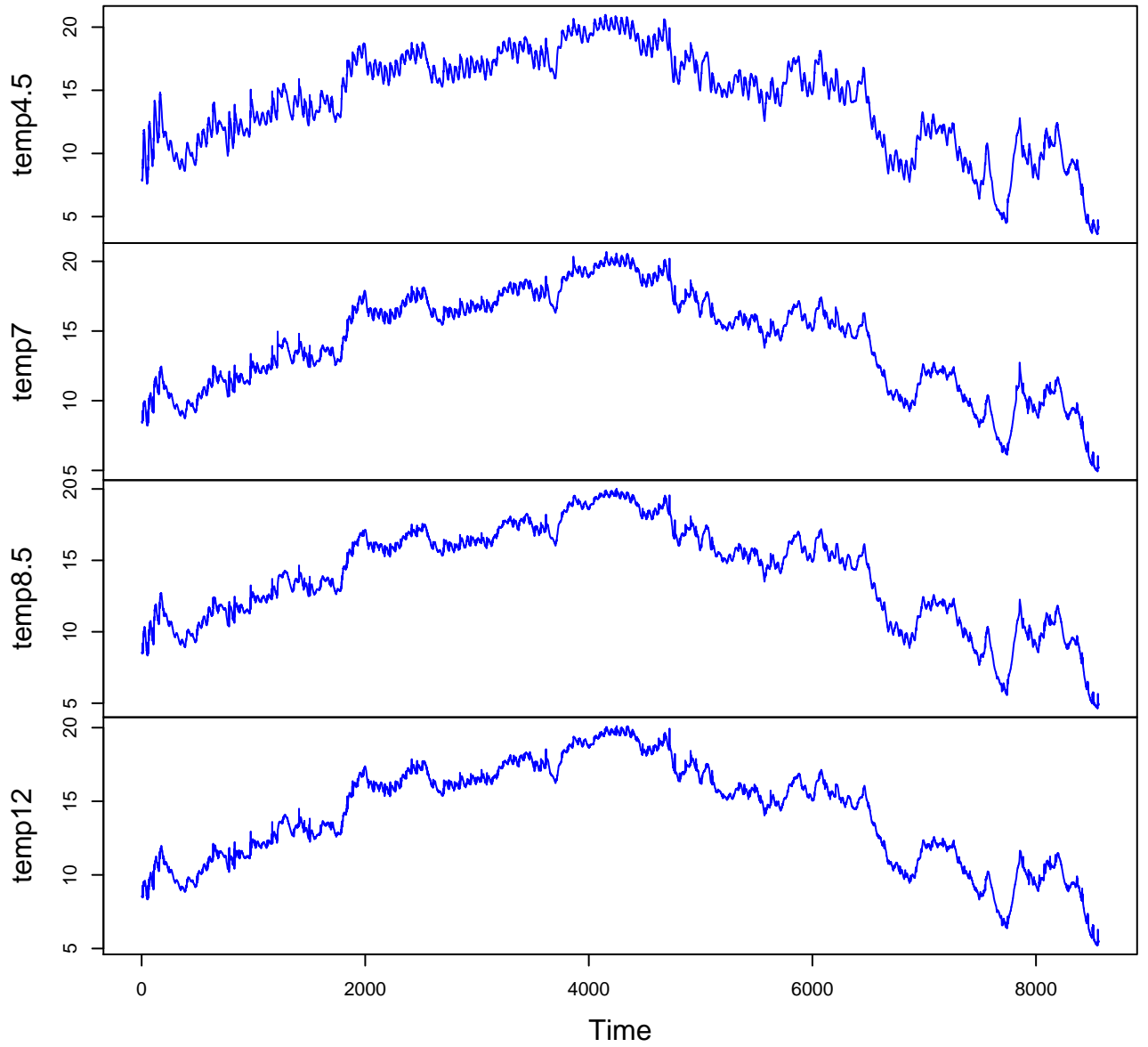
# HF006-03 Plot 2



# HF006-03 Plot 3



# HF006-03 Plot 4



# HF006-03 Plot 5

