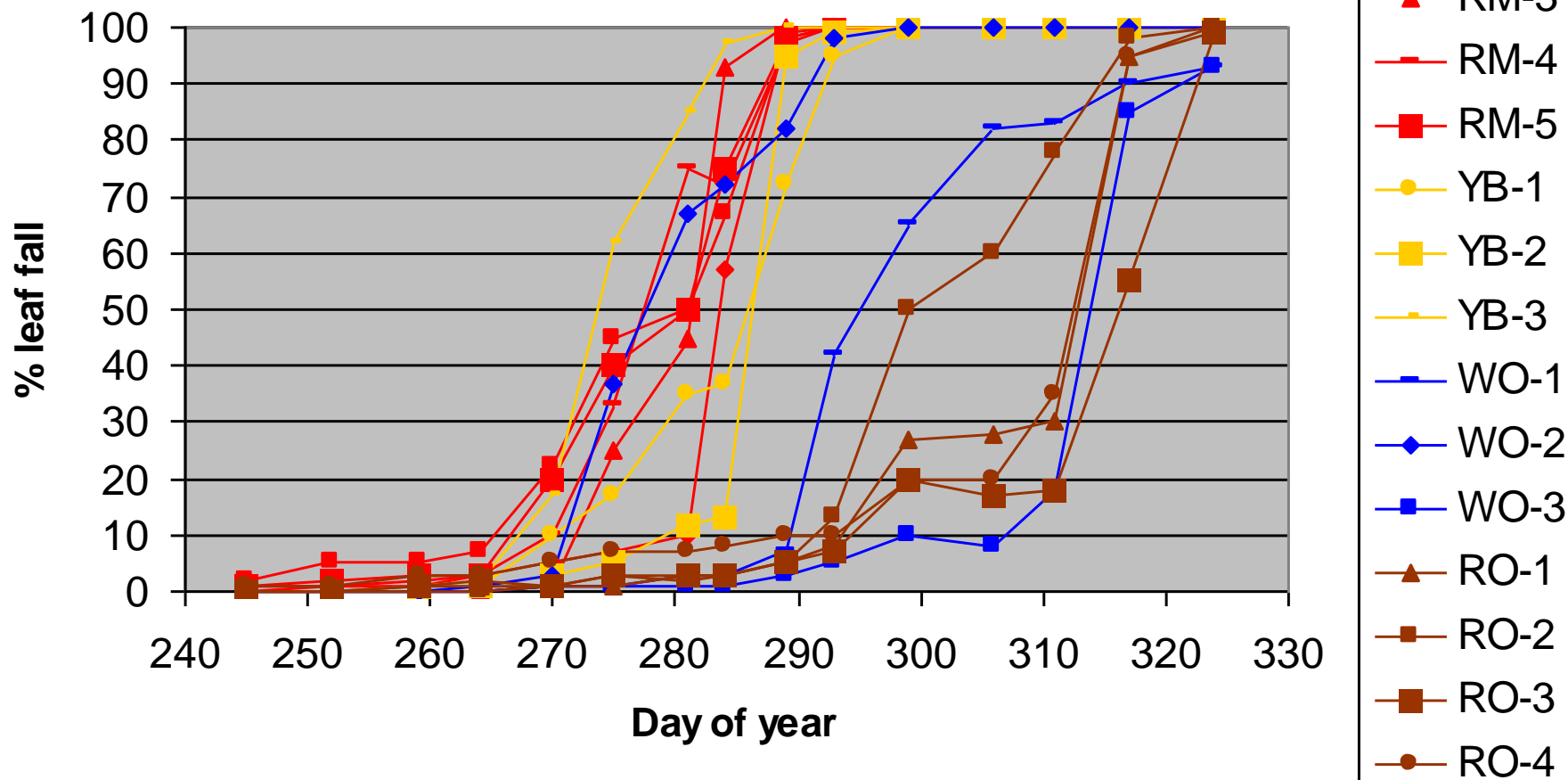
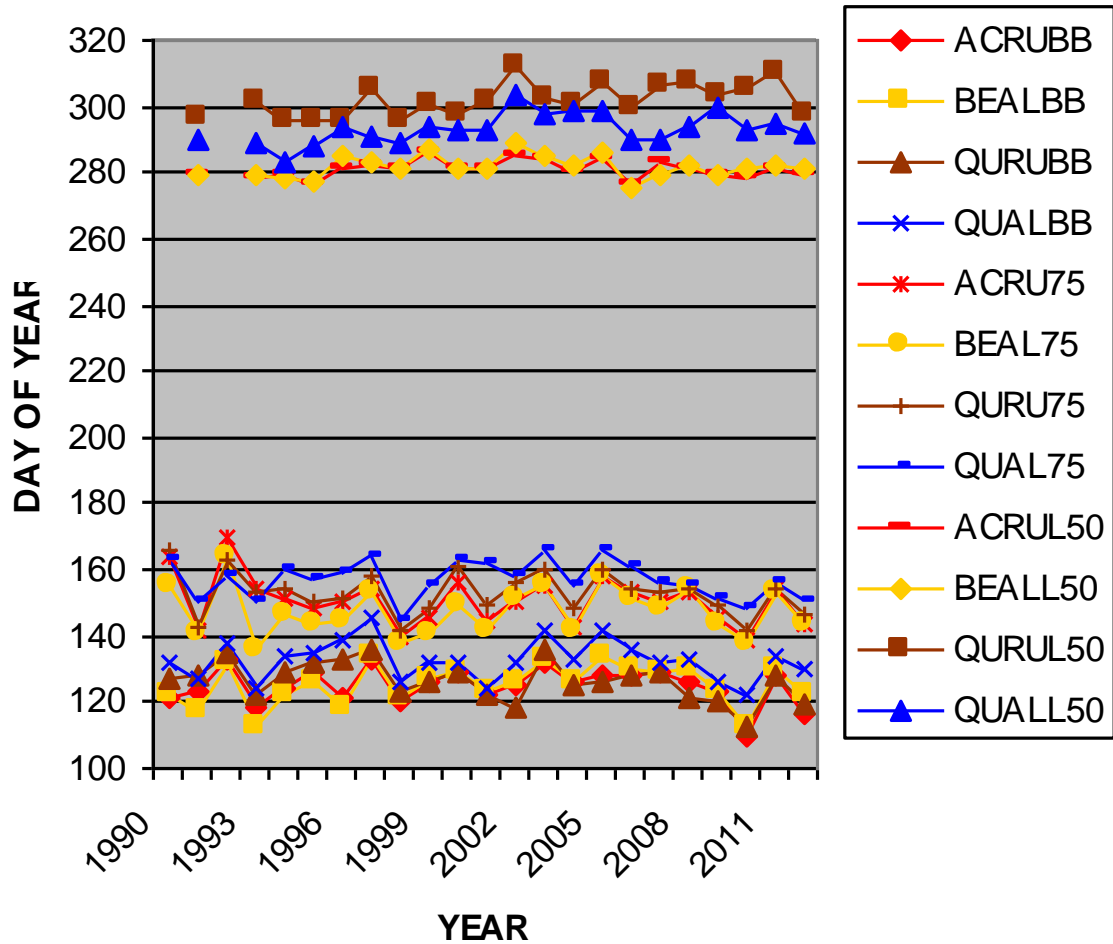


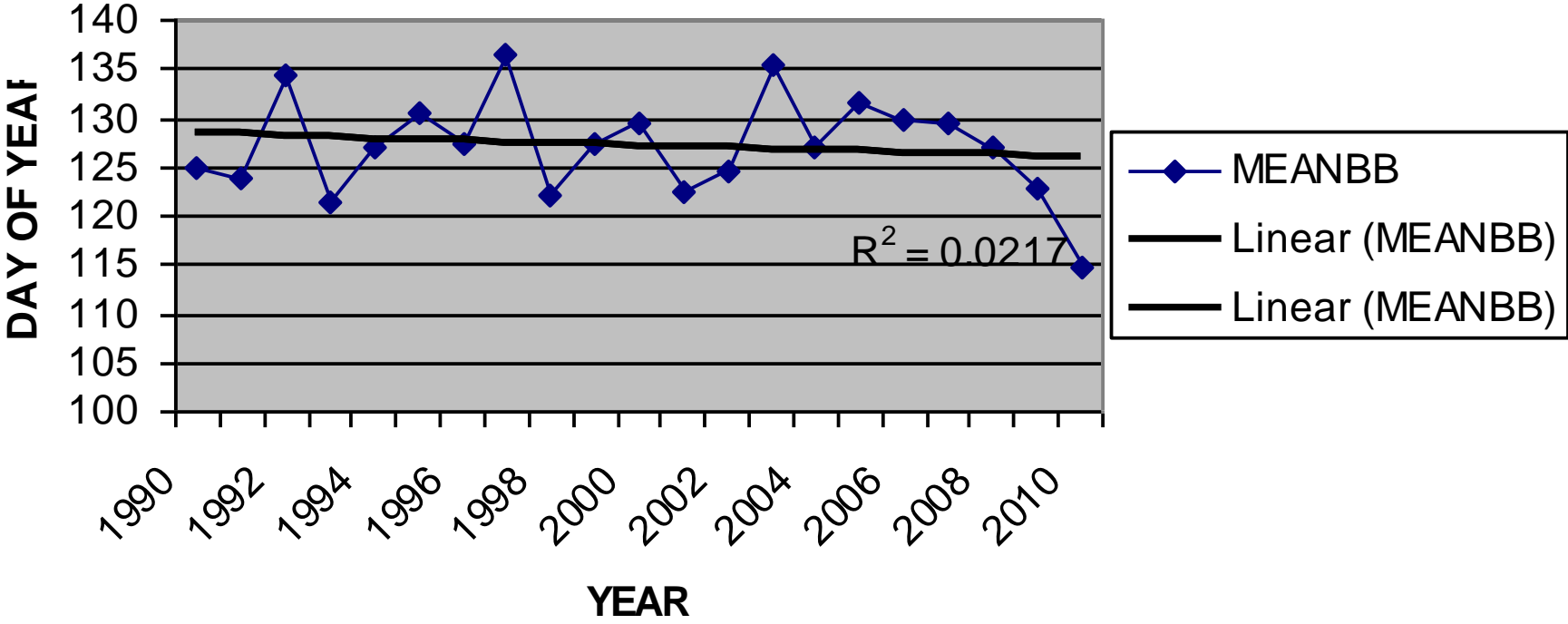
Leaf fall by tree - 4 species - 2011



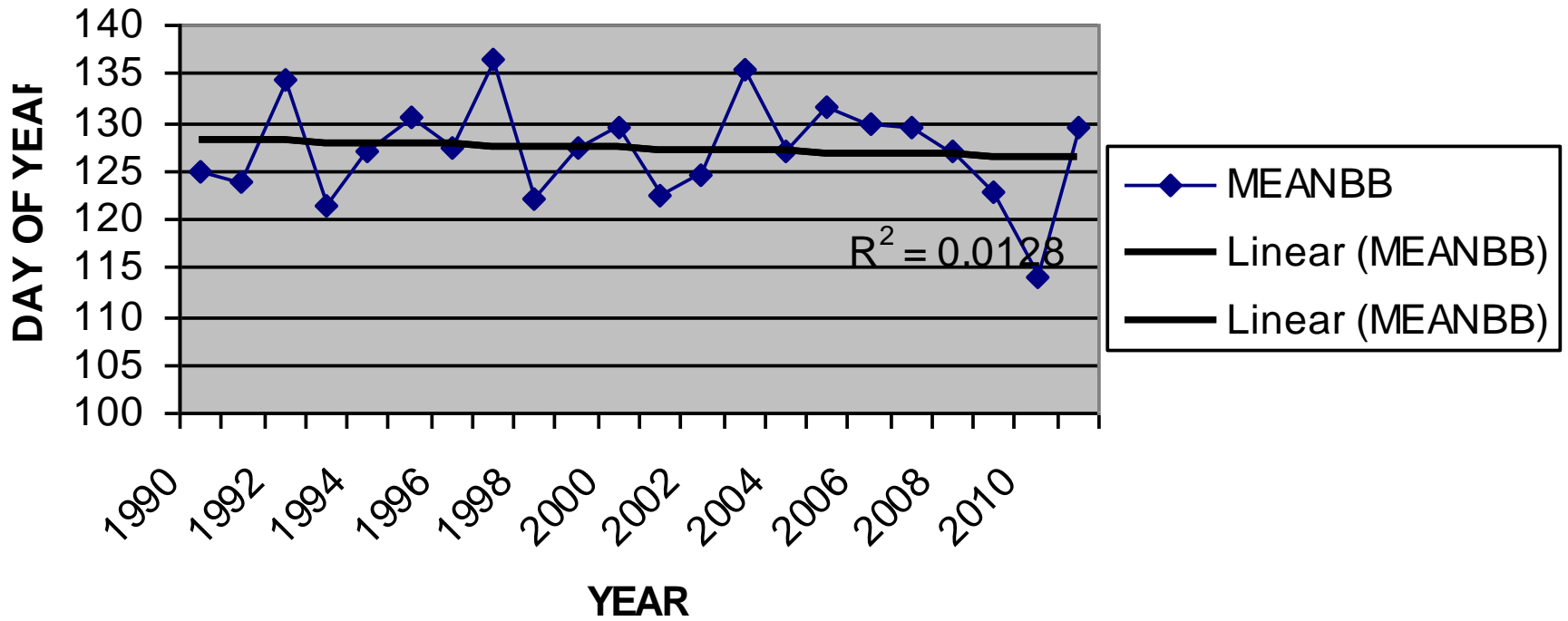
**50% bud break(BB) 75% leaf development(75)
and 50% leaf fall(L50) for 4 species (Acer
rubrum-ACRU, Betula alleghaniensis-BEAL,
Quercus rubra-QURU and Q. alba-QUAL)**



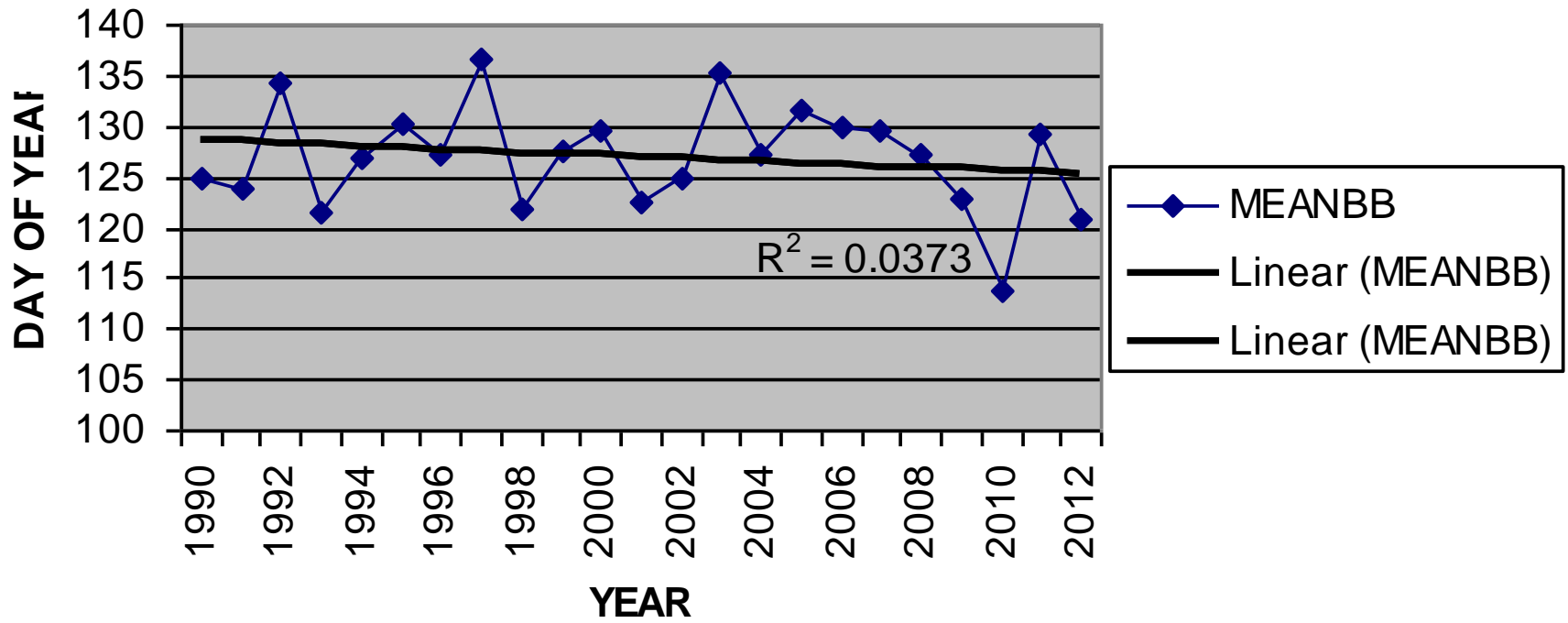
MEAN BB50 (4 SPP, N=15)



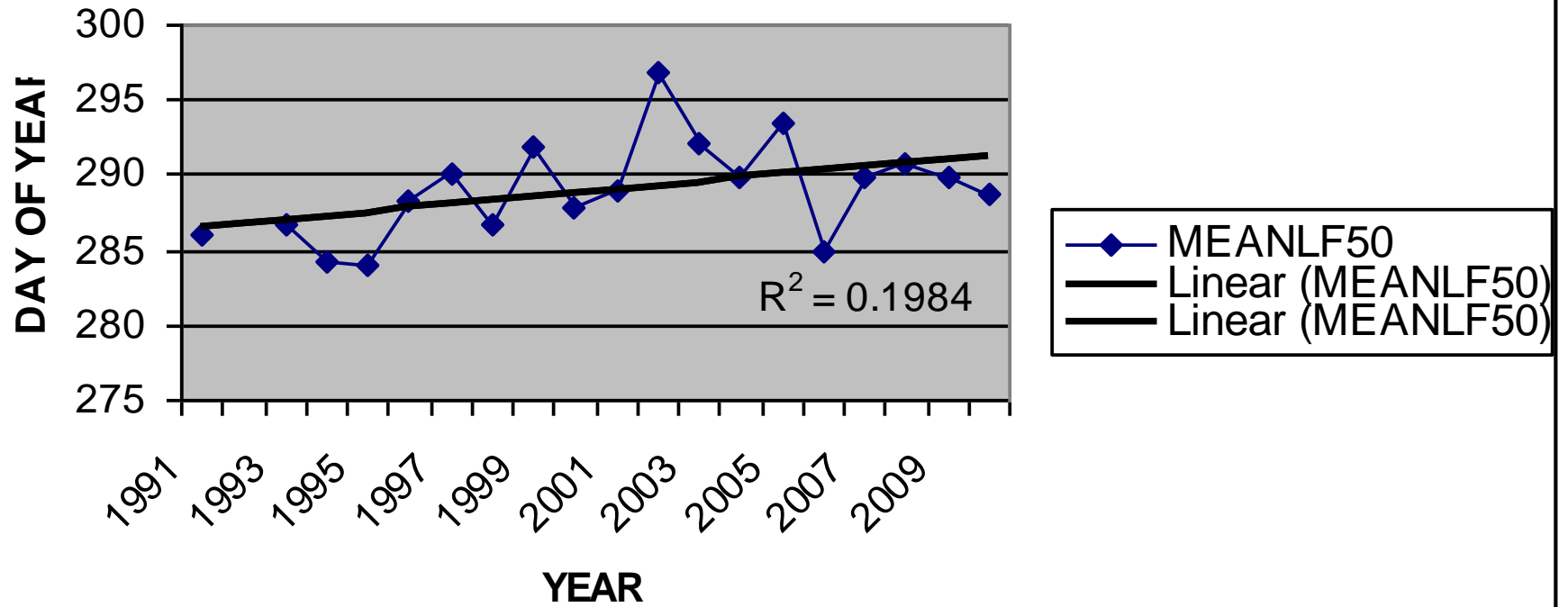
MEAN BB50 (4 SPP, N=15)



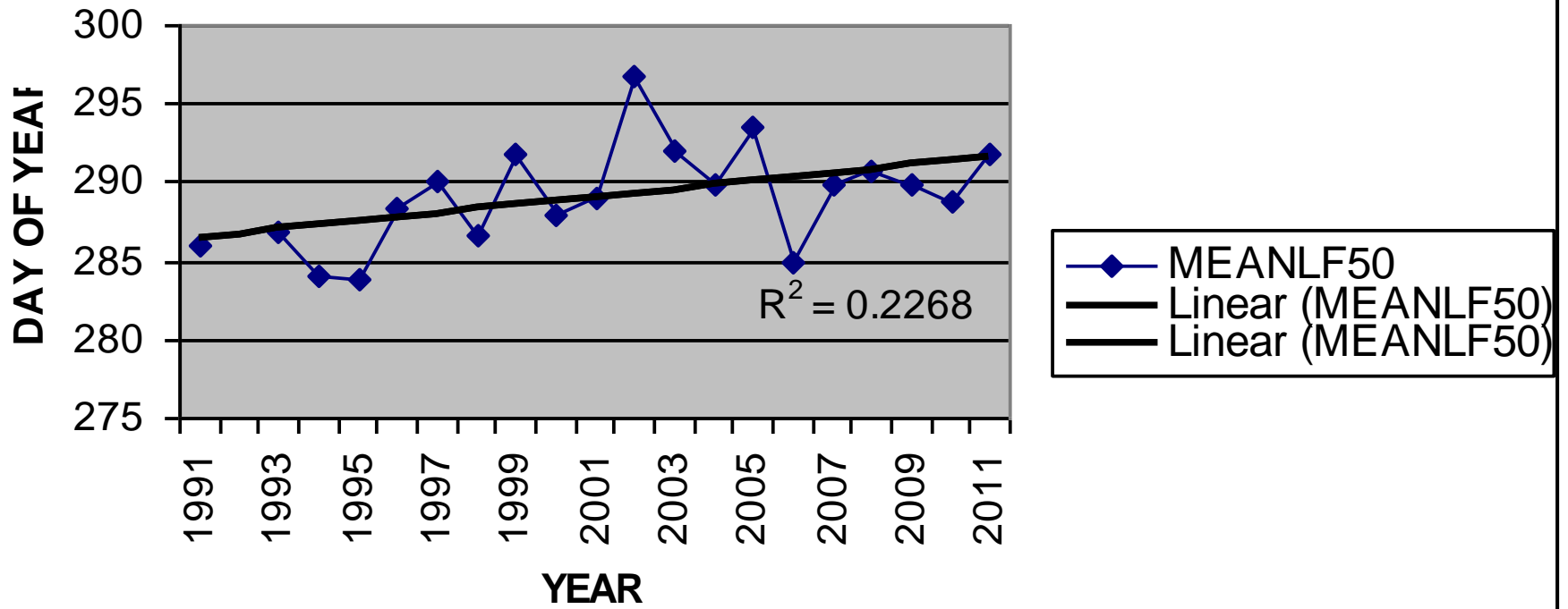
MEAN BB50 (4 SPP, N=15)



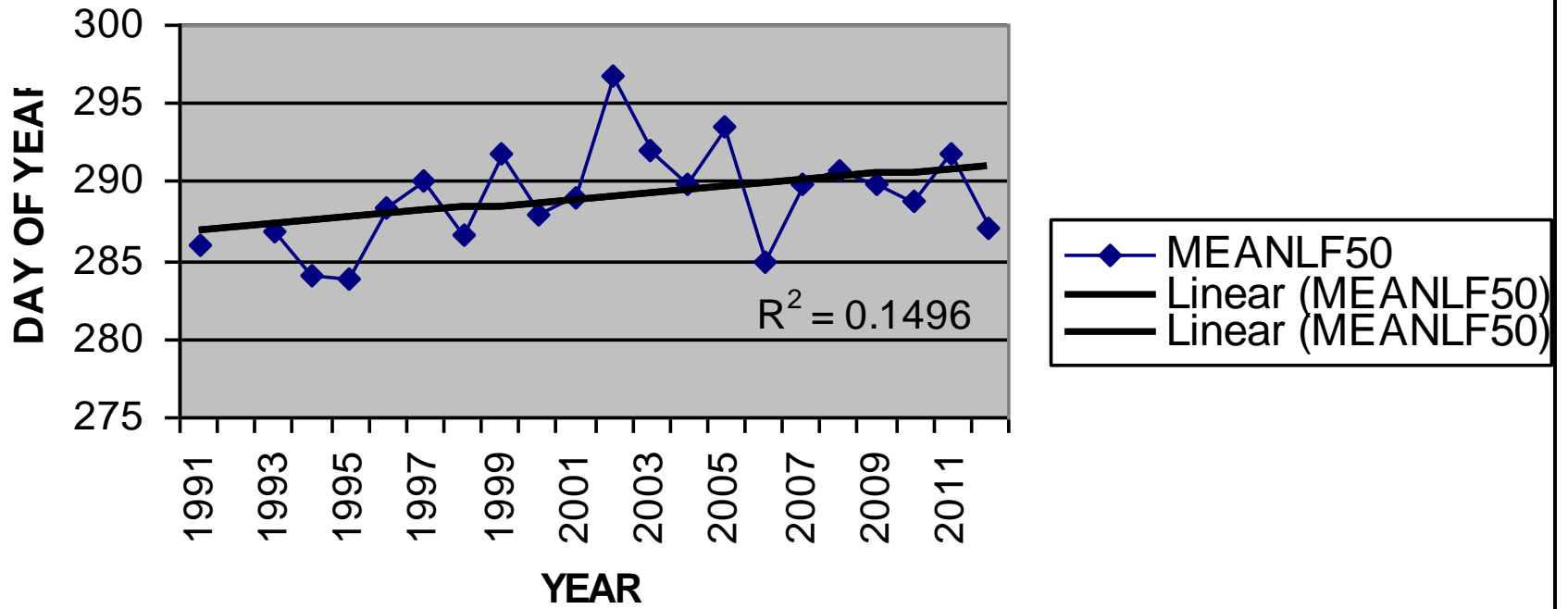
4 SPP (N=15) LF50



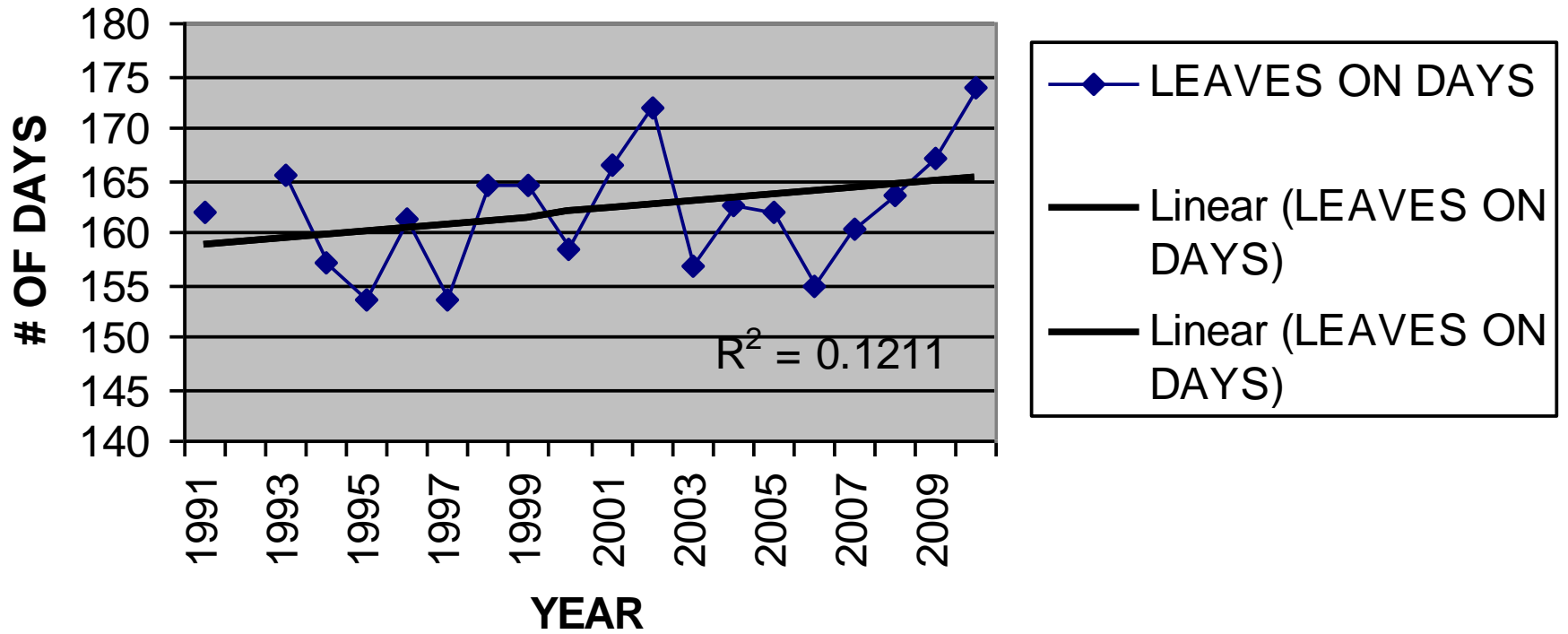
4 SPP (N=15) LF50



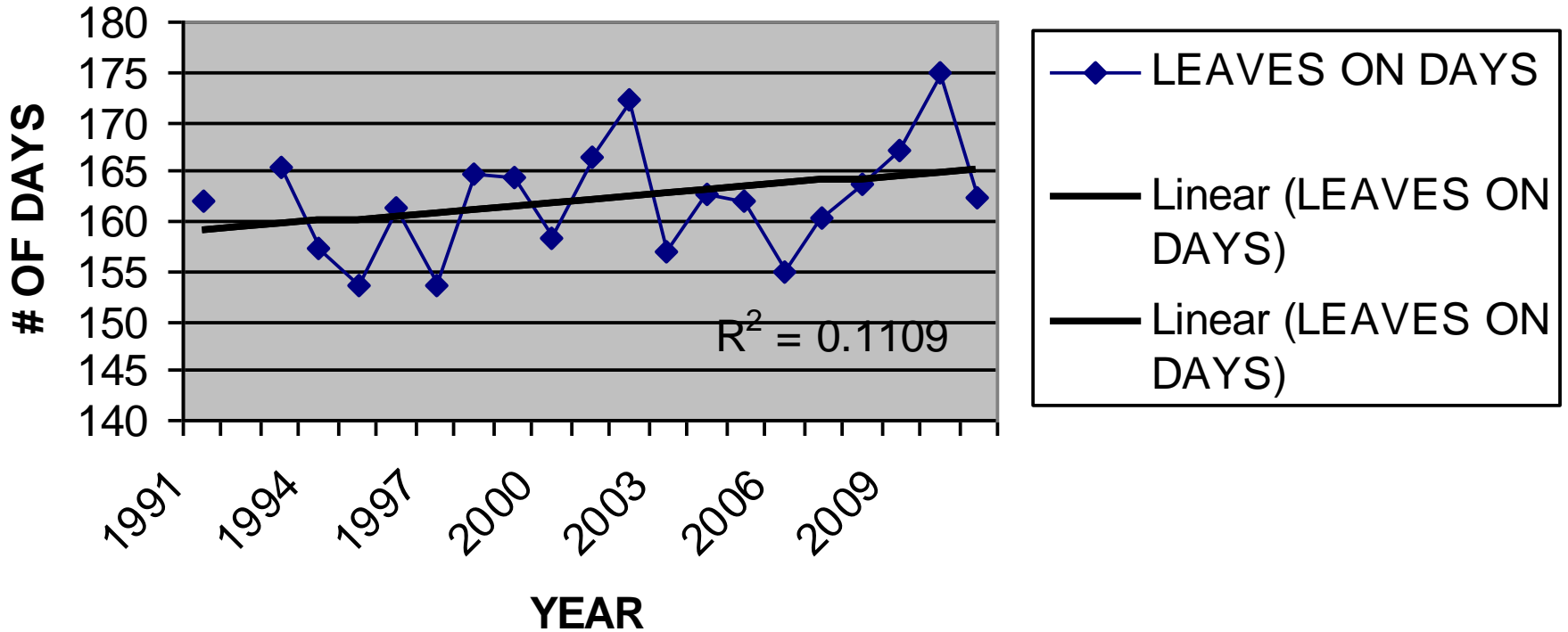
4 SPP (N=15) LF50



LEAVES ON DAYS (4 SPP, N=15)



LEAVES ON DAYS (4 SPP, N=15)



LEAVES ON DAYS (4 SPP, N=15)

