

Harvard Forest Schoolyard Ecology

Teacher Recognition Ceremony

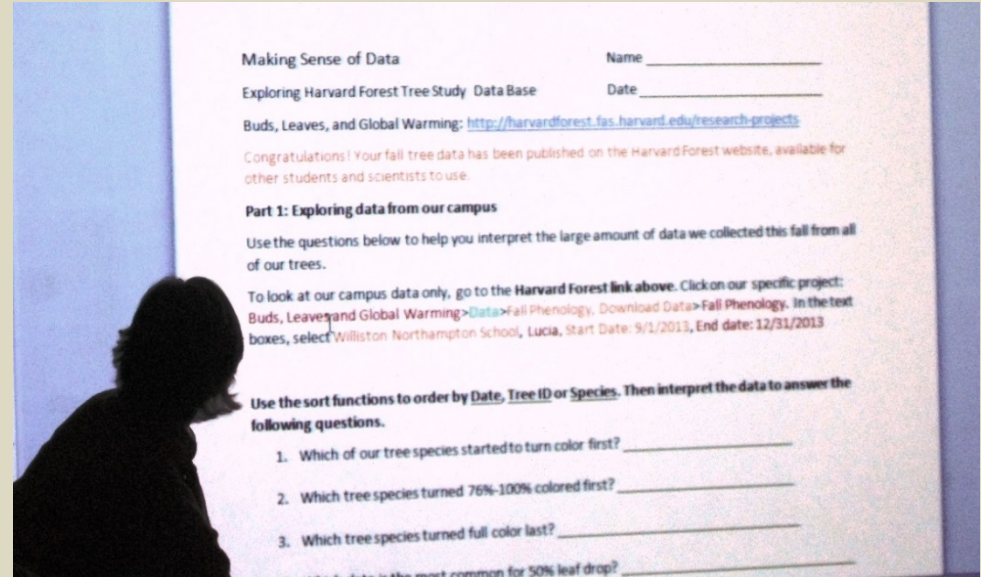


Honoring 5-11 years of Dedicated Leadership of Schoolyard Ecology Projects

Jane Lucia

6 years

Buds, Leaves and Global Warming



Lesson Plan/Presentation Contributions

- Lucia. 2012. Talking Trees (7th grade).
- Lucia. 2014. Exploring the Harvard Forest Data Base.
- Lucia. 2014. Making Sense of Data; Exploring the Harvard Forest Tree Study Data Base.
- Contributed to Schoolyard Online Graph Documents





Melanie McCracken

6 Years

*Buds, Leaves and Global Warming
Our Changing Forests*

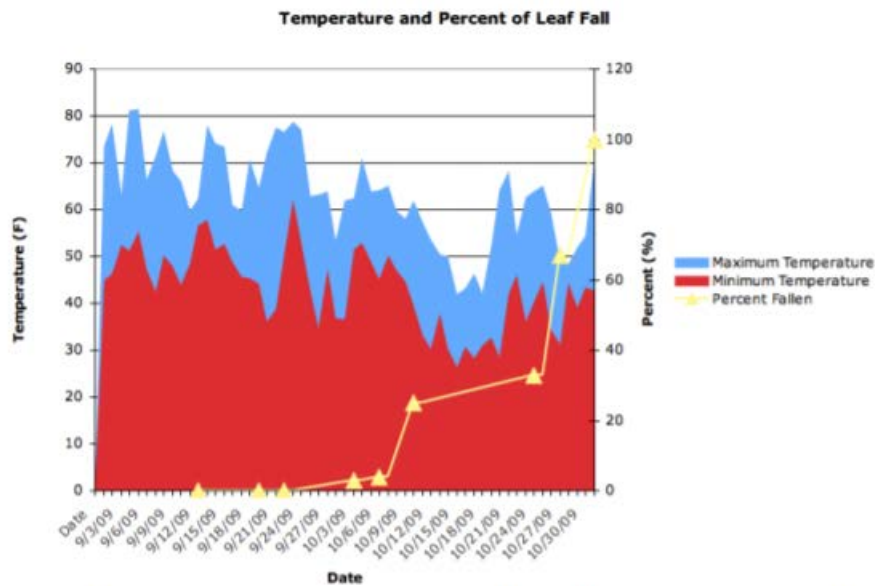
- Presented at HF Scientist Symposium
- Served as Mentor Teacher for Both Buds and CF projects
- Contributed to Schoolyard Online Graphing Documents
- McCracken, Snow. 2014. Introducing our Newest project, "Our Changing Forests; Notes from a Schoolyard Teacher"



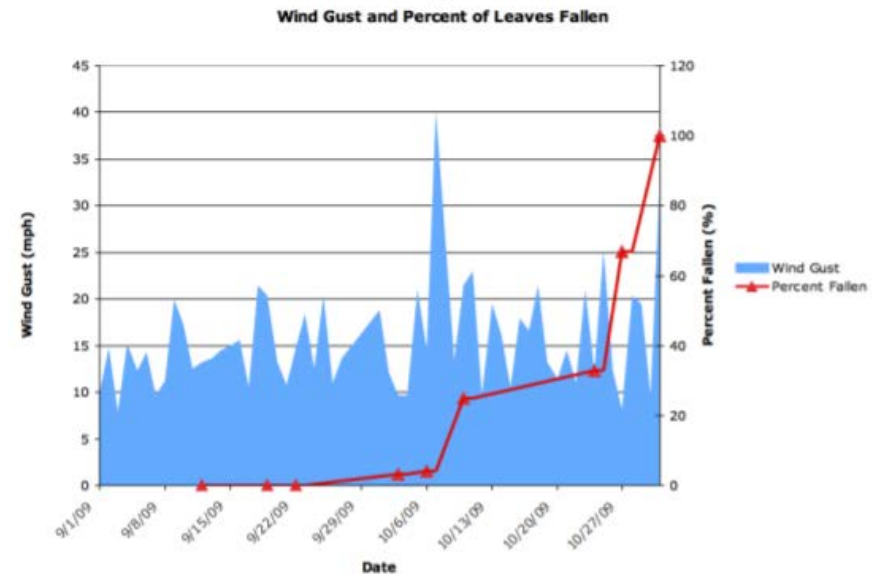


Nora Murphy-8 Years

Buds, Leaves and Global Warming



Graph created by Annie King, Concord-Carlisle High School class of 2010. Leaf fall data collected by members of the CCHS Environmental Field Studies Group (Contact: Nora Murphy, nmurphy@colonial.net). Weather Data collected by the CCHS Weather Station (Contact: Jeff Yuhas juhas@colonial.net).



Graph created by Annie King, Concord-Carlisle High School class of 2010. Leaf fall data collected by members of the CCHS Environmental Field Studies Group (Contact: Nora Murphy, nmurphy@colonial.net). Weather Data collected by the CCHS Weather Station (Contact: Jeff Yuhas juhas@colonial.net).

- Contributed to Schoolyard Online Graph Documents



Robin Gurdak Foley- 8 years

Hemlock Woolly Adelgid

Field Science in Kindergarten!







Louise Levy- 8 Years

Buds, Leaves and Global Warming and Our Changing Forests

- **Mentor Teacher** for both Buds /Leaves and Our Changing Forests projects
- Levy. 2010. [Data organizers for transferring field data to computer.](#)
- Levy. 2011. [Belchertown HS: lots goin' on.](#)
- Levy. 2013. [Match a Leaf Activity.](#)
- Levy. 2014. [Tell the Story of Our Tree](#)
- Levy. 2015. [Micro-Directions for Buds, Leaves, Global Warming Related Activities](#)
- Levy. 2015. [Student Instructions for Entering Buds, Leaves Data onto Online Database](#)
- Contributed to Online Graphing documents
- Awarded Toyota Tapestry Grant to build Env. Ed. collaboration with neighboring Elementary School.





Joann Mossman - 8 Years

Buds, Leaves and Global Warming

- Excellence in Environmental Education Award
Massachusetts Exec. Office of Energy and Environmental Affairs

- Mossman. 2011. [Graphing Activities.](#)

- Mossman. 2014. [Connections to the Common Core, MA Frameworks and Next Generation Science Standards for HF Schoolyard Ecology Buds, Leaves and Global Warming Study.](#)



Year	Spring Bud Burst		Autumn Leaf Fall		Growing Season total # of days
	Calendar Date	Julian Day	Calendar Date	Julian Day	
2010					
2011					
2012					
2013					

- Mossman. 2014. [Outline of Introductory Lessons for HF Schoolyard Ecology Buds, Leaves and Global Warming.](#)
- Mossman. 2014. [Introductory Lessons for Buds, Leaves, and Global Warming.](#)
- Mentor Teacher



Sally Farrow - 9 Years

Vernal Pool; Buds, Leaves and Global Warming ; and Our Changing Forests



- Contributed to Online Graphing Documents
- Mass. Assoc. of Science Teachers Award



- Farrow, 2013. [Ponds and Pools at Drumlin Farm.](#)
- Farrow, Pitkin. 2016. [Ecological Monitoring Program for All Learners at Drumlin Farm](#)



Karen Anderson - 9 Years

Hemlock Woolly Adelgid



- Brought MacDuffie students to HF for field Trips yearly.
- Contributed High Quality Photos to our image collection to share online, etc.
- MacDuffie. 2010. [Student slide show.](#)
- MacDuffie. 2012. [Student microclimate slide show 1.](#)
- MacDuffie. 2012. [Student microclimate slide show 2.](#)



Chuck Skillings – 10 Years



Buds, Leaves and Global Warming





Maria Blewitt- 11 Years

Buds, Leaves and Global Warming



Excellence in Environmental Education Award
Executive Office of Energy and the Environment
Massachusetts State House

- Blewitt. 2009. [Connecting phenology study to learning about climate change.](#)
- Blewitt. 2011. [Approaching Walden lesson plans.](#)
- Blewitt. 2011. [Peak autumn leaf color in Thoreau's time and today.](#)
- Blewitt. 2016. [Using the Phenocam Website with Your Students.](#)
- Developed and analyzed teacher surveys related to Citizen Science integration in schools.
- Developed and analyzed Undergrad Surveys related to K-12 experiences leading to choice to pursue science in Higher Ed.



Katherine Bennett

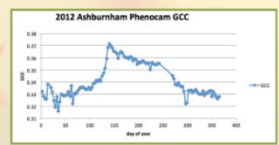
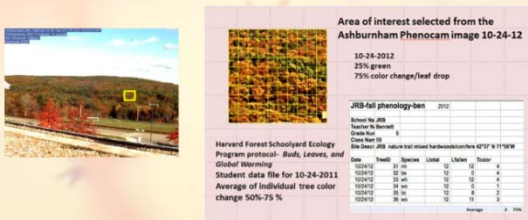
12 years

Hemlock Woolly Adelgid Buds, Leaves and Global Warming



New England Environmental Education Association Award

Comparing the percent of color change and leaf drop in the student data to the percent in the canopy



- Bennett. 2007. [HWA data analysis lesson.](#)
- Bennett. 2010. [Curriculum materials.](#)
- Bennett. 2010. [Plot studies with students.](#)
- Bennett. 2011. [Using Google Document to enter data.](#)
- Bennett. 2011. Phenology and student scientists: part I and part II.
- Bennett. 2012. Mentor teacher presentation: Woolly Bully

Harvard Forest Mentor

(NSTA) Boston



- Contributed website content for Project Budburst
- Bennett. 2012. [Phenology and student scientists \(5th grade\).](#)
- Bennett. 2012. Using Phenocam images with the Schoolyard phenology protocol: [part I](#) and [part II](#).
- Bennett. 2015. "Woolly Bully"
- Bennett, Snow. 2016. [Taking Phenology to the Next Level.](#)
- Research Experience for Teachers (RET)





Certificate of Achievement
Marian Russell
Harvard Forest

Certificate of Achievement
JoAnna Morrison
Harvard Forest

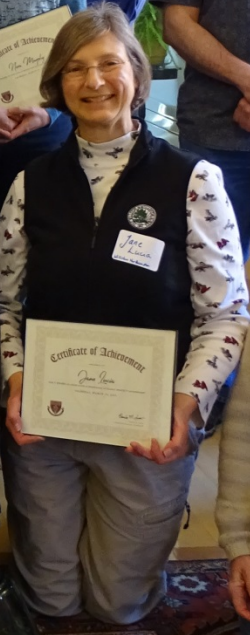
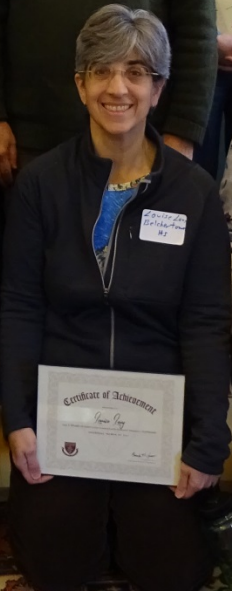
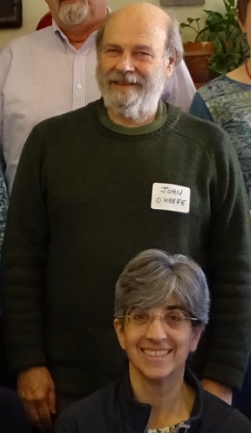
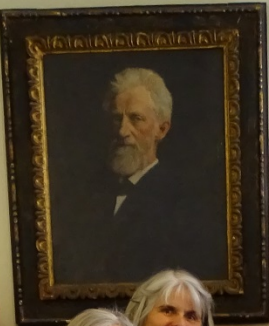
Certificate of Achievement
Robin Gaudin King
Harvard Forest

Certificate of Achievement
Lynn Gray
Harvard Forest

Certificate of Achievement
Janice
Harvard Forest

Certificate of Achievement
Sally Turner
Harvard Forest

Certificate of Achievement
Ann Johnson
Anderson



5+ Year Teachers Who Could Not Attend The Ceremony

- Janet Gordon
- Carol Rosenthal
- Anne McDonald
- Judy Gibson
- Debra Kimball
- Maryann Postans
- April LeSage
- Ed Santella