

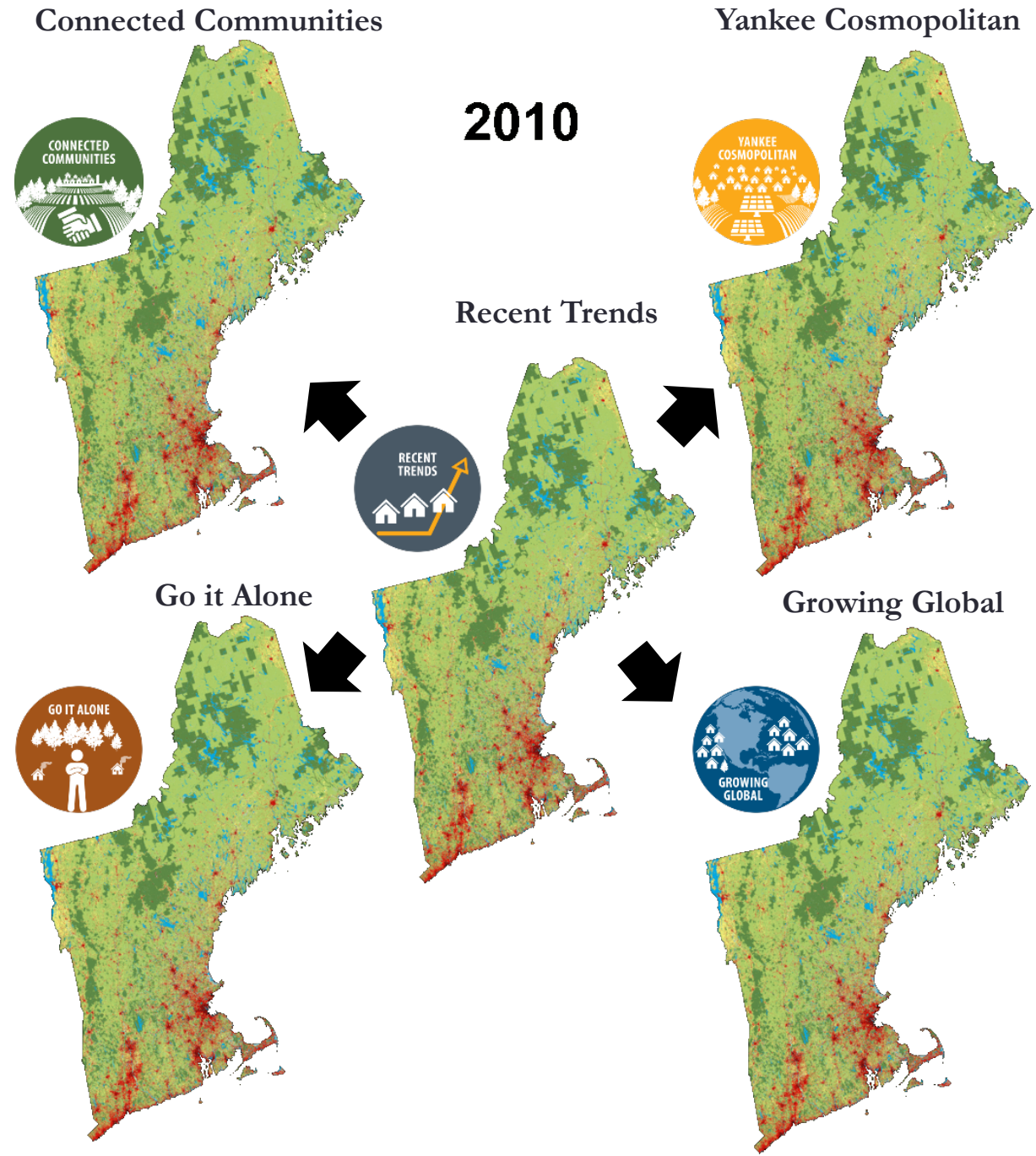


New England Landscape Futures Explorer

Marissa Weiss, Joshua Plisinski, Lucy Lee

- 1 “Recent Trends” scenario
- 4 “Stakeholder” scenarios

Each scenario consists of a series of digital maps and an accompanying narrative.



New England Forest Cover and Human Population

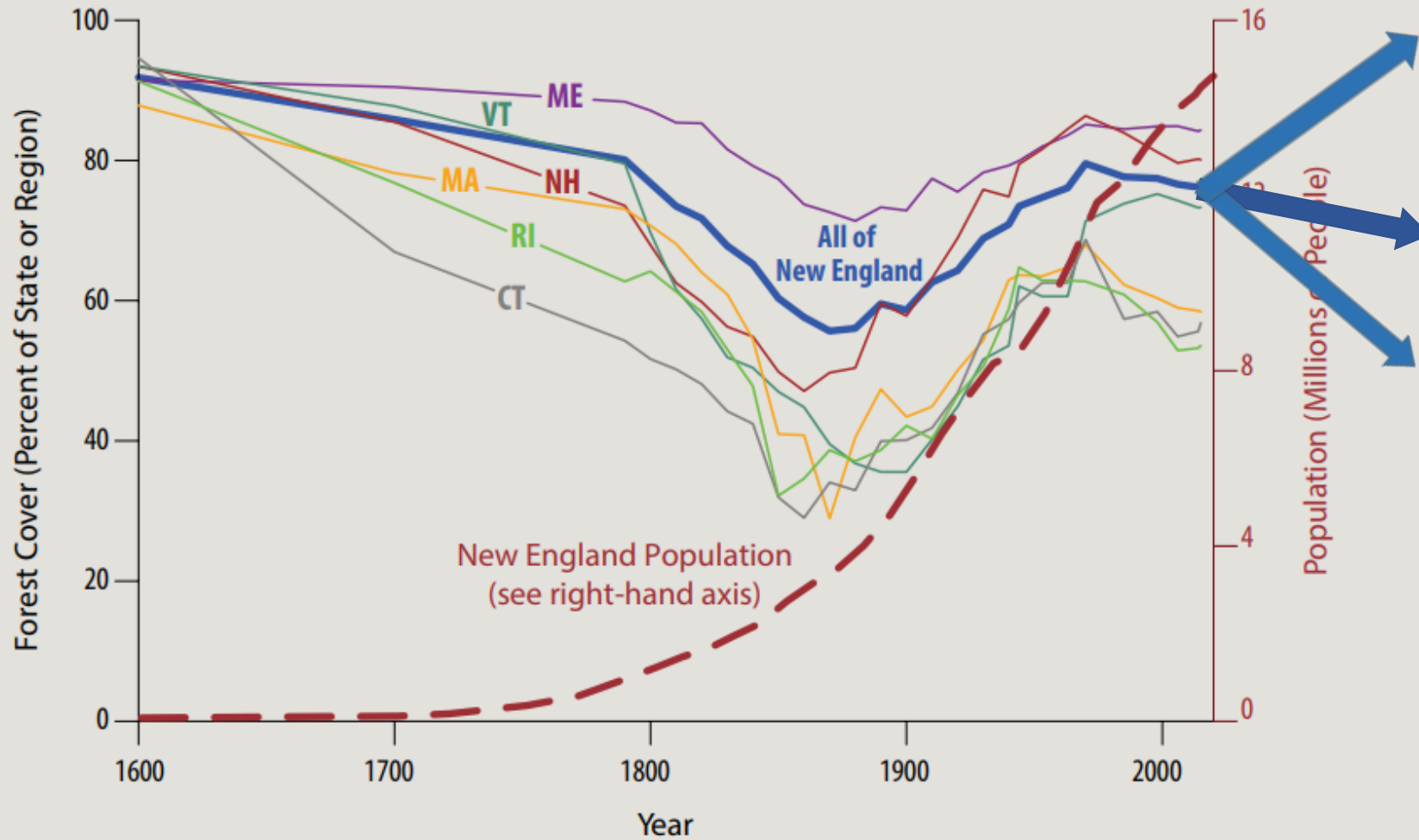


Figure 3. *The second wave of forest loss now under way in New England jeopardizes the region's environmental success story, which has been characterized by the return of forests following the decline in agriculture in the East.⁵*







Stakeholders

Perspectives of resource management professionals on the future of New England's landscape: Challenges, barriers, and opportunities

Marissa F. McBride^{a,*}, Matthew J. Duveneck^a, Kathleen F. Lambert^{a,b}, Kathleen A. Theoharides^c, Jonathan R. Thompson^a



Stakeholder subfield group classifications and group size (n).

Subfield	n	Description and/or examples
Conservation	16	Conservation NGO employees (e.g., Land trusts); a few government employees
Forestry & parks	8	Predominantly state government employees with responsibilities related to forest, parks and/or recreation
Forestry	8	Predominantly business employees or forestry consultants, e.g., timber and forestry management companies
Urban forestry	2	Urban forestry coordinators in government and NGOs
Agriculture	3	Individuals with responsibilities related to agriculture, e.g., regional food solution networks, natural resource management
Town planning	3	Town planners, planning consultants, Department of planning employees
Land investors	2	Business sector employees working in industries such as real estate and land development
Economic development	2	Employees from organizations aiming to promote regional community planning and economic development
Other	13	Individuals working across domains such as environmental health, tribal concerns, and public policy

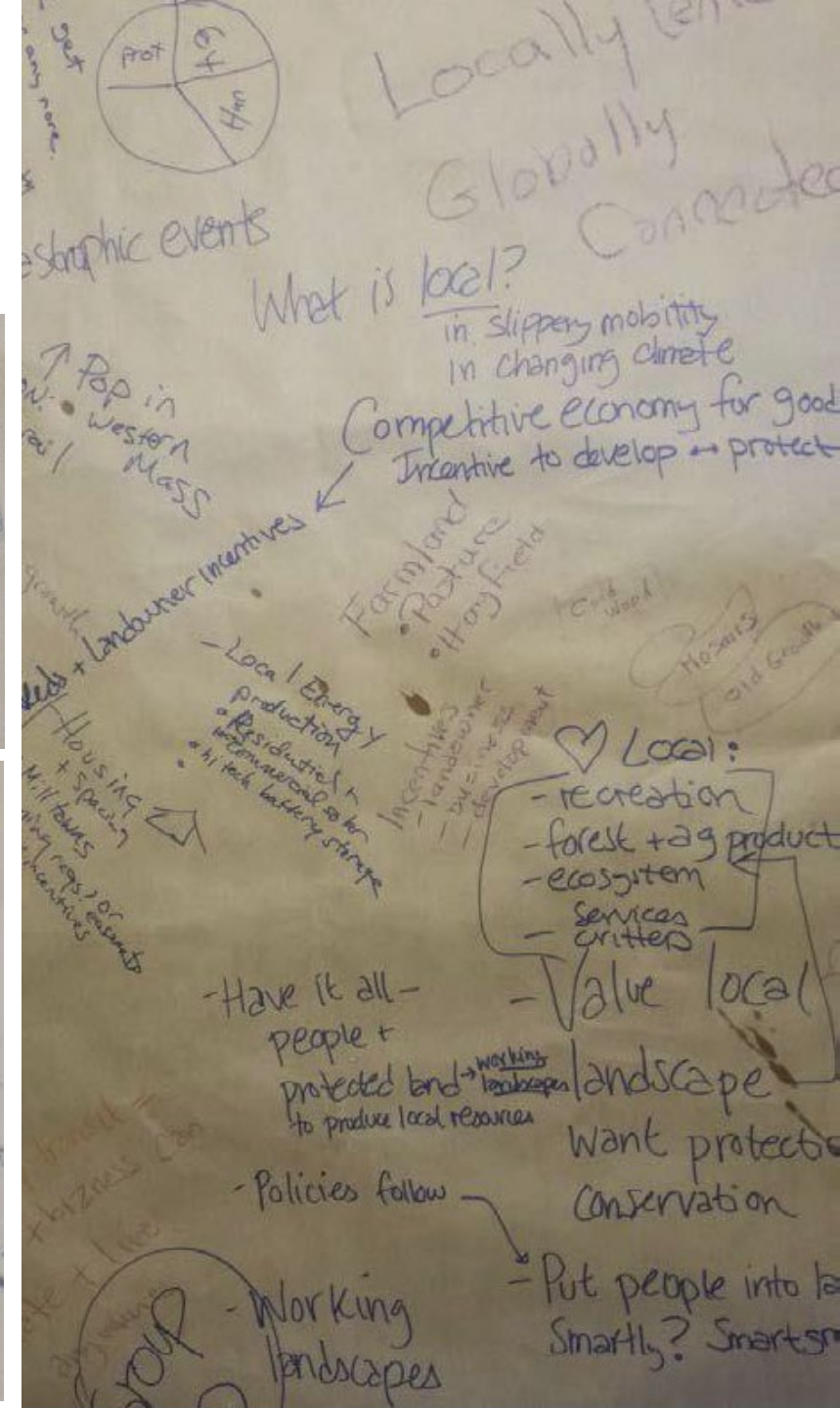
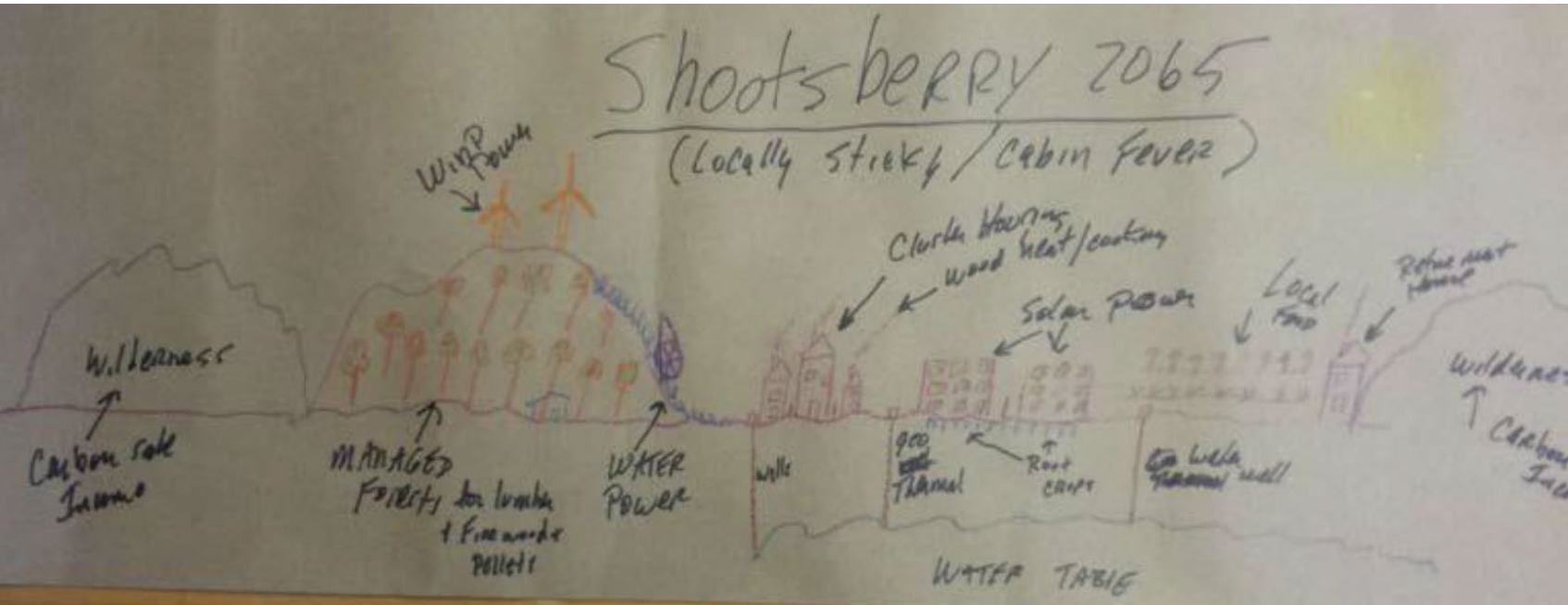
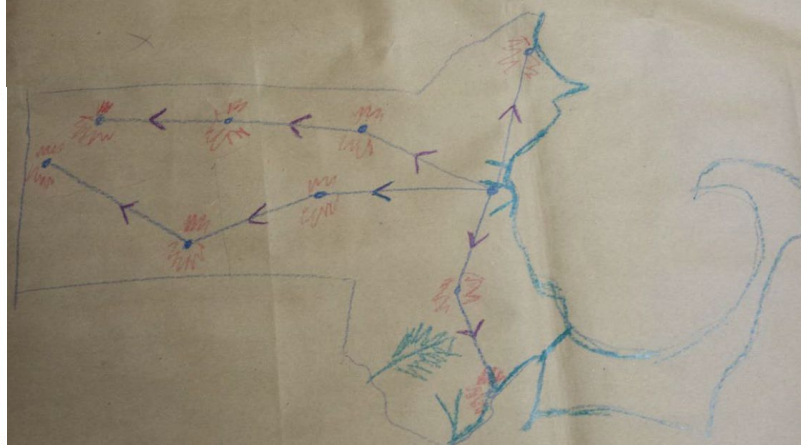
Scenario Building

Increasing the effectiveness of participatory scenario development through codesign

Marissa F. McBride¹, Kathleen F. Lambert², Emily S. Huff³, Kathleen A. Theoharides⁴, Patrick Field⁵ and Jonathan R. Thompson¹



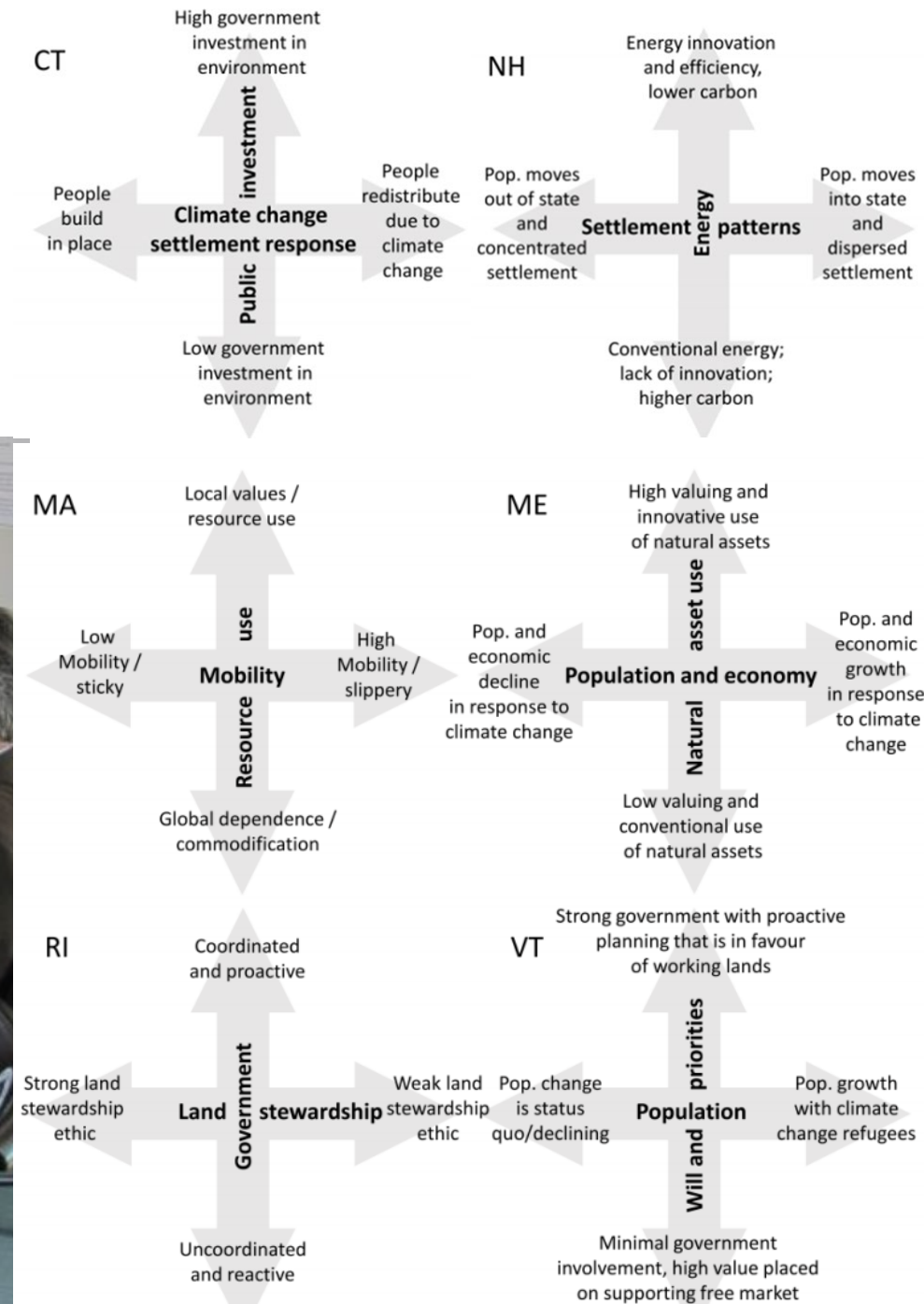
Prigatiny:
 A Government Community
 - Shikony → where would we rather be? Global Coast Mobile?
 - Japan → What is best for local forests?
 - MV
 - Hawaii
 - Amba
 island culture - cannot leave here to buy in



Scenario Building

Increasing the effectiveness of participatory scenario development through codesign

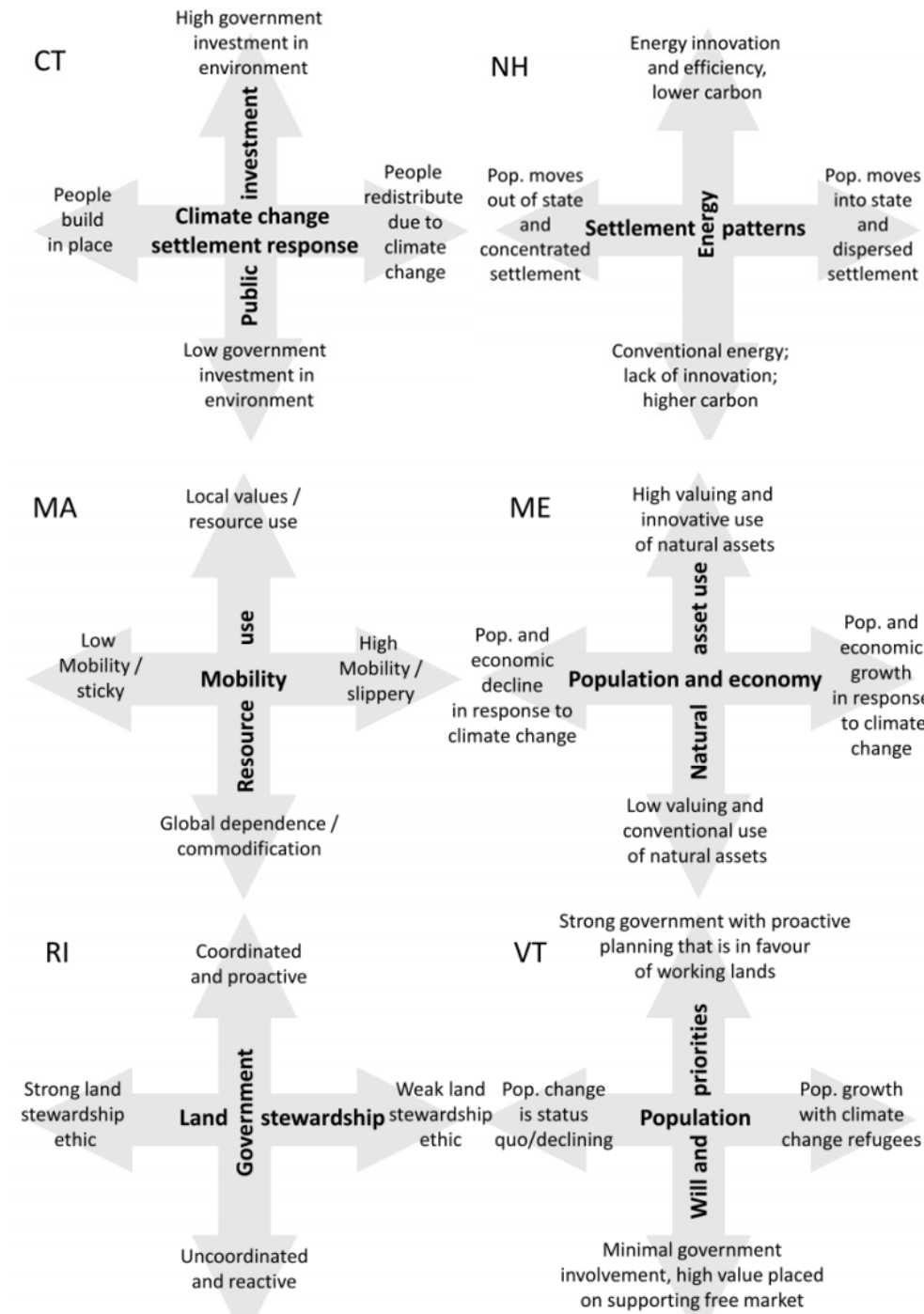
[Marissa F. McBride](#)¹, [Kathleen F. Lambert](#)², [Emily S. Huff](#)³, [Kathleen A. Theoharides](#)⁴, [Patrick Field](#)⁵ and [Jonathan R. Thompson](#)¹



Scenario Building

Increasing the effectiveness of participatory scenario development through codesign

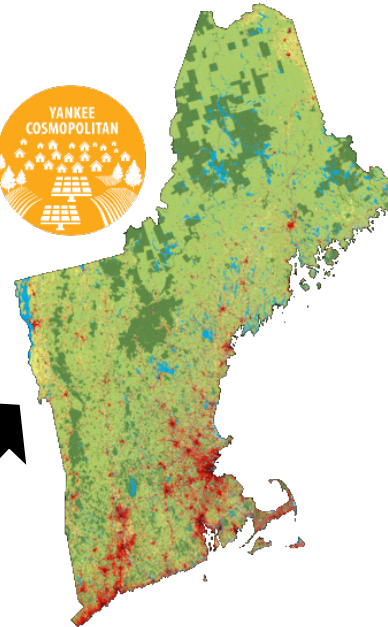
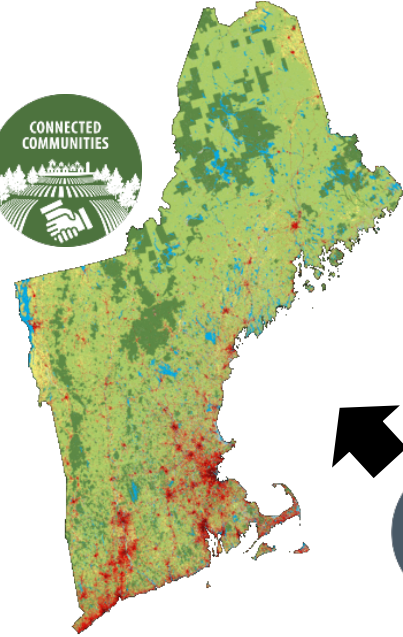
[Marissa F. McBride](#)¹, [Kathleen F. Lambert](#)², [Emily S. Huff](#)³, [Kathleen A. Theoharides](#)⁴, [Patrick Field](#)⁵ and [Jonathan R. Thompson](#)¹



Connected Communities

Yankee Cosmopolitan

2010



Go it Alone

Growing Global

