

Cousin's Field Vernal Pool

What Other Factors Influence This Wetland?

Susan Erickson

Thoreau School Concord

Erickson Vernal Pool Digital Projects

- <http://vernal-journal.com/>
- <http://thoreau.colonial.net/students/digitalfarm/vernal/Vernal/Welcome.html>
- <http://scratch.mit.edu/projects/musical/2320048>
- <http://www.youtube.com/watch?v=hzudVSqmh6A>

Purpose of Lesson: To Evaluate the Vernal Pool Using Different Lenses



Group One: Water Quality

- <http://vernal-journal.com/2012/04/09/the-effect-of-catch-basins-and-storm-drains-on-the-vernal-pool/>

How does our pool work?



Water Quality Testing

Date	Location	Conductivity	pH
1/24/12	Cousins	10,000	6.5
1/27/12	Cousins	200	6
3/1/12	Catch Basin	8,000	7.2
3/3/12	Cousins	995	6.63
3/3/12	VP	129	6.2
3/31/12	Catch Basin	1952	6

What Can We Do?

- Tell the town about the clogged up catch basin.
- Insert a filter in the catch basin like the one near Warner's Pond

How Does Erosion Impact the Vernal Pool?



<http://vernal-journal.com/2012/04/09/how-does-erosion-impact-the-vernal-pool-by-ec-10/>

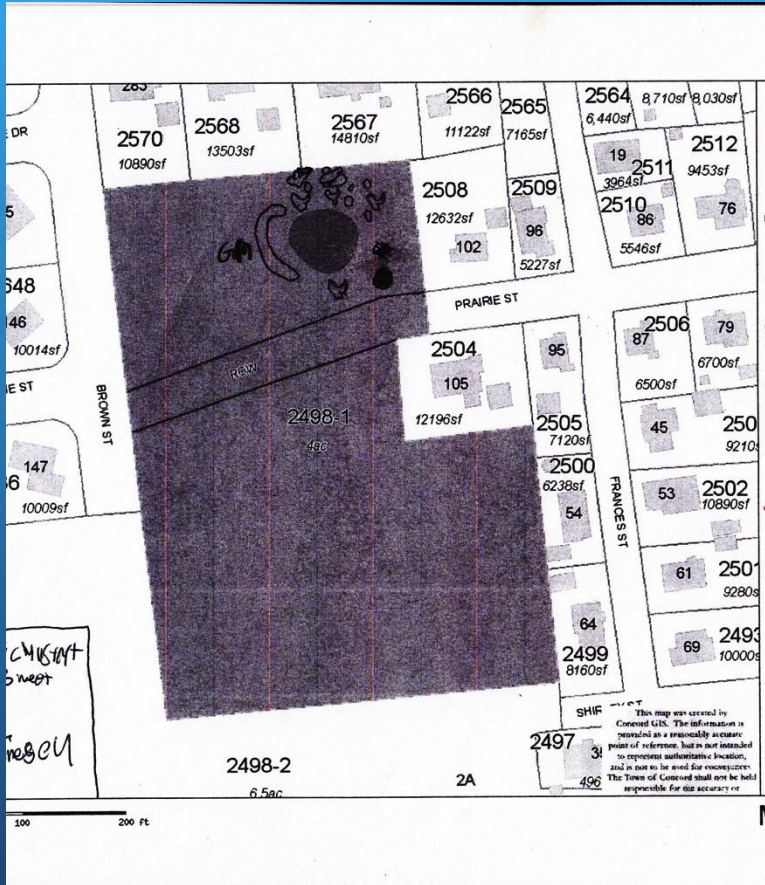
What Can We Do?

- Put a fence up around the vernal pool so that kids won't chase soccer balls down there.
- The fence will also keep out teenagers.
- Put up signs for the neighbors so they will not throw their yard waste down this hill.

How Do Invasive Species Impact the Vernal Pool?

- <http://vernal-journal.com/2012/04/09/maps-of-invasive-species-at-cousins-field-vernal-field-by-ec7/>

Invasive Species



What Can We Do?



The poster features a central photograph of a garlic mustard plant with green leaves and a red stem, growing among fallen autumn leaves. The text is arranged around this central image in various colored boxes: yellow stars for 'Garlic' and 'Mustard', a green box for a question, two green boxes for background information, a large green box for event details, and a red box for instructions.

Garlic

Want to help stop an invasive species?

Mustard

Garlic mustard was introduced to the United States of America by colonists from Europe using garlic mustard in their herb gardens.

Garlic mustard is a part of the brassica family. This makes it a close relative of cabbages, mustard, and kale.

ON MAY 1ST FROM 1-3 PM, GO AND PICK GARLIC MUSTARD AT A PATCH AT COUSINS FIELD WITH MRS. ERICKSON'S FIFTH GRADE CLASS. THE GROUP (UP TO 4 PEOPLE) WHO PICKS THE MOST GARLIC MUSTARD WILL RECEIVE A TASTY PRIZE.

When you pick the garlic mustard, make sure you have pulled the roots out. If not, then it will come back. Also, when you pick it, immediately put

- Create a map of all the invasive species at the vernal pool and Cousin's Field.
- Organize a pull of an invasive species.

How Has the Vernal Pool Changed?

- <http://vernal-journal.com/2012/04/09/comparing-our-vernal-pool-data-to-other-local-pool-data-by-ec11/>

September to March

September 2011



March 2012



What Can We Do?

- Continue to visit monthly, checking for signs of obligate and facultative species.
- Continue to measure and compare our water levels to others on the Harvard Schoolyard site.

How Can We Get People to Appreciate the Vernal Pool?

- <http://vernal-journal.com/2012/04/10/how-can-we-get-people-to-appreciate-the-vernal-pool-and-cousins-field-area/>

Our Year at the Pool and Field



What Can We Do?

- Educate people through events like Watershed WISE Night.
- Put up signs about the vernal pool and why it is important.
- Get the Natural Resources Commission to put up signs like the ones at Warner's Pond about no dumping in the area.