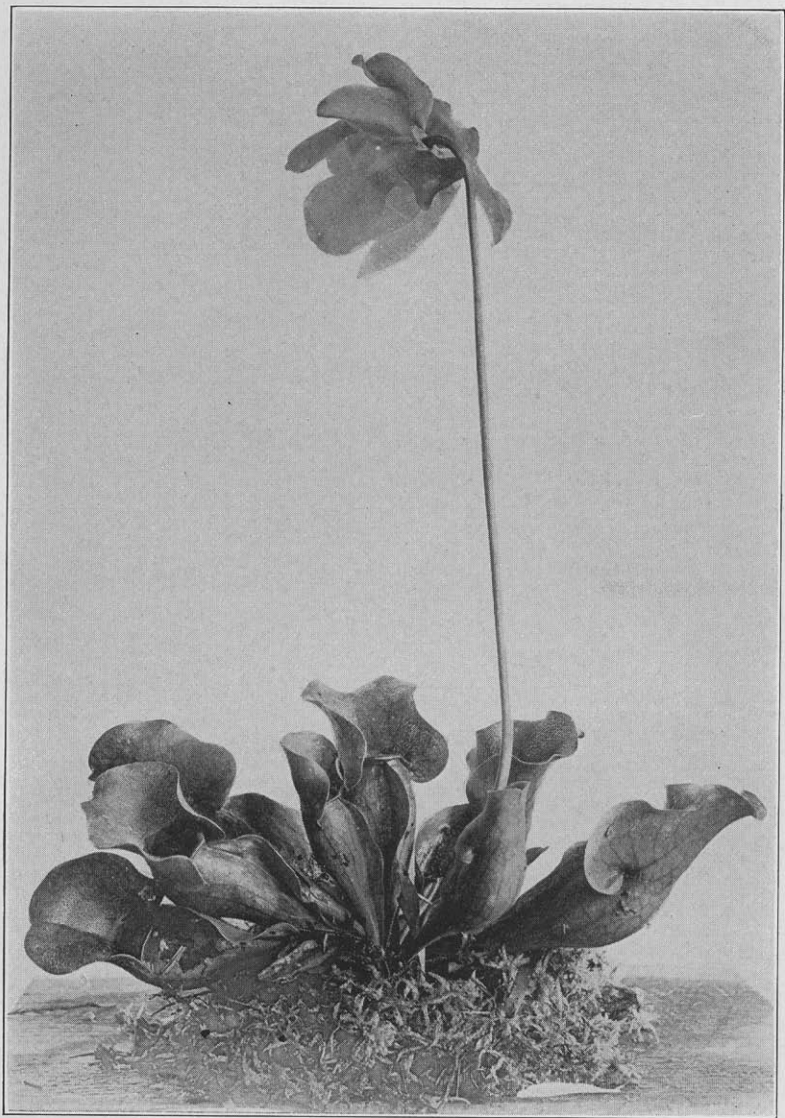
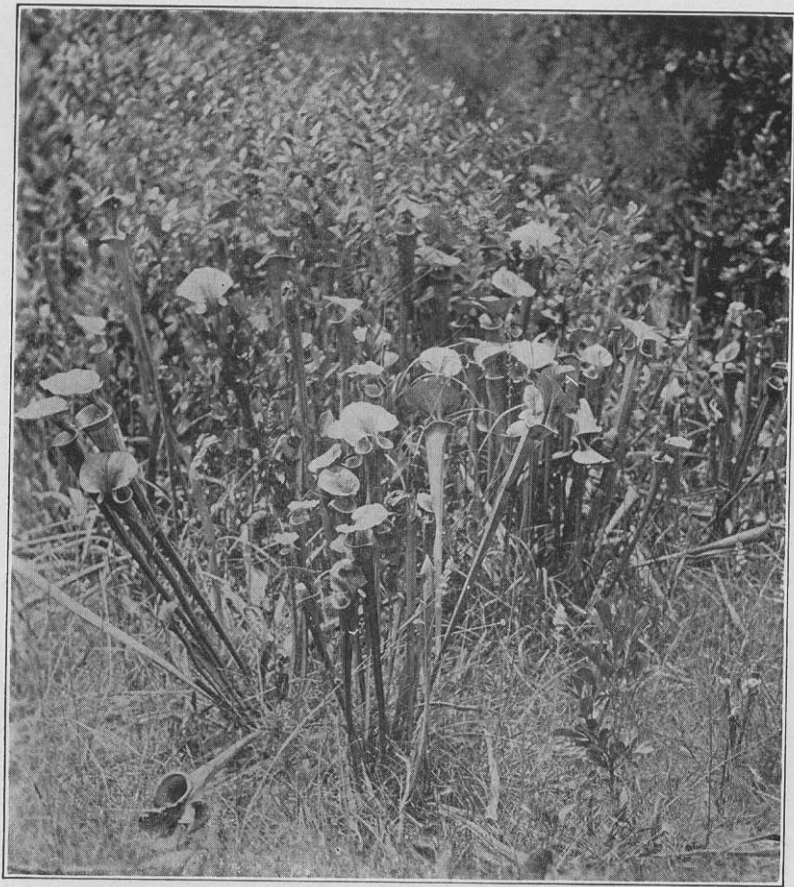


Radiograph of the pitchers of *S. purpurea* L. (full size). The liquid contents have been removed. The mass of captured insects is shown by the shadow. Moths, beetles and flies were identified. Radiograph by Goodspeed.



S. purpurea L., in full bloom with open pitchers. Ocean County, N. J., where vigorous pitchers often attain a length of 25 or more centimeters



Group of *S. Flava* L. showing open pitchers. Midsummer at Southern Pines, N. C. The pitchers attain a maximum height of 100 cm., though the usual height is 50 to 75 cm.



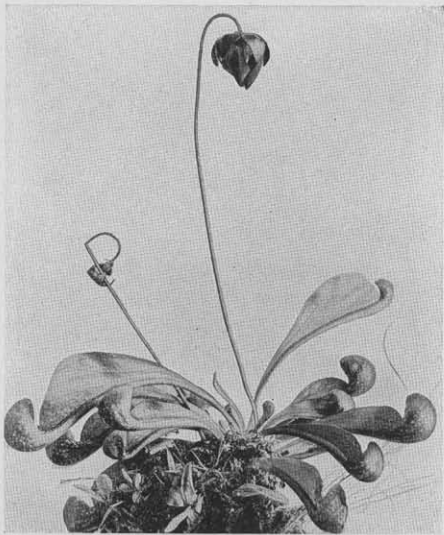
S. Sledgei Macf., showing recently opened pitchers, the flower, from which the petals have fallen, and the shriveled pitchers of the previous year. Biloxi, Miss., where the pitchers attain a height of 40 to 60 cm.



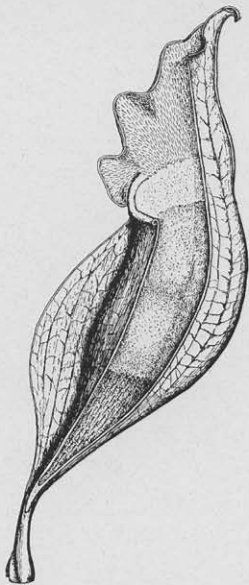
Sarracenia minor Walt. (*S. variolaris* Michx.), showing the hooded pitcher with its translucent windows and its yellow-petalled flower. Photographed at Summerville, South Carolina, where the pitchers of this abundant species commonly reach a height of 30 cm.



Mature plant of *Darlingtonia californica* Torr., showing twisted pitcher and expanded hood, the translucent, window-like spots, and the pendant bilobed flap. Photographed in Plumas Co., Cal., where the pitchers commonly attain a height of 50 to 75 cm.



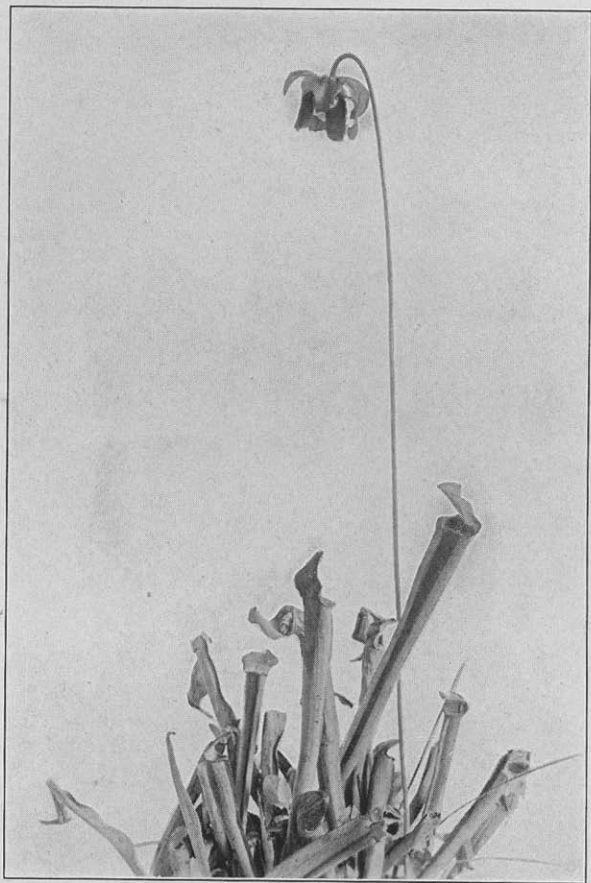
Sarracenia psillacina Michx., showing the blossom and the semi-recumbent pitchers. Photographed in southern Mississippi, where the pitchers commonly attain a length of 20 cm.



Section of open pitcher, *S. purpurea* L., according to Macfarlane, showing wing to the left, the hairy lip, the smooth conducting surface below the rim, the smooth glandular area (a species characteristic) and the detentive zone with its downwardly pointed hairs.



S. drummondii Croom, showing fully opened pitchers and younger forms with closed lids and lips.
Mobile Co., Ala., where the mature pitchers attain a height of 45 to 70 cm.



Sarracenia rubra Walt., showing clustered growth and the flower. Pitchers exceeding 60 cm. are not infrequent, but smaller forms, of from 25 to 40 cm., are more common. Photographed at Southern Pines, N. C.